

# Stone Cabin "Complex"

In efforts to streamline round ups and removals, the BLM now often allows several Herd Management Areas (HMAs) and their associated statistics to be combined in environmental assessments for wild horse and burro removals called "Complexes". This lends a greater degree of ease to BLM for large removal proposals but conversely, makes it much more difficult for the public to evaluate the information they provide.

The Stone Cabin Complex in Nevada was one such assessment. Issued in January 2007, it included the Stone Cabin, Saulsbury, and Reveille HMAs and the Monitor Wild Horse Territory (WHT) (3). The Monitor WHT was later withdrawn from the proposal with BLM citing a lack of established AMLs from United States Forest Service (USFS).

This Complex identified 1,227,000 acres of public land affected within the proposal with an "Appropriate Management Level" (AML) of a maximum population of 547 wild horses (4).

As a result of both court settlements and BLM authorizations, 294,570 acres of the original Herd Area (HA) habitat has been removed from wild horse use (5) and over 13,000 cattle graze this same area. (6)

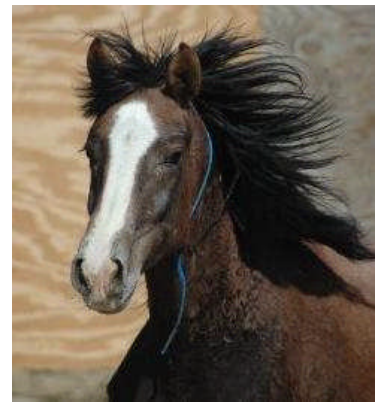
In February 2007, the BLM removed 461 wild horses, 8 died or were destroyed during the removal operations with an estimated 275 wild horses still remaining within the HMAs in order to achieve a "thriving ecological balance" with other rangeland users. (7) The estimated cost of these removals is approximately \$1 million dollars. (8)

## Reveille HMA

HMA Acres: 105,494 Acres Removed: 23\*  
Habitat Loss: -283,061 Acres Remaining: 94  
AML: 138 Acres per Horse: 764

\*Horses removed were residing outside HMA boundaries.

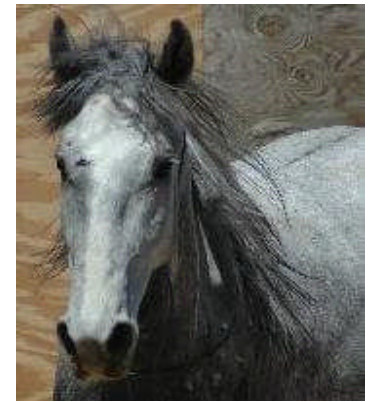
- (1) Stone Cabin Complex Wild Horse Gather, Environmental Assessment NV065-EA07-028, Department of the Interior, Bureau of Land Management, Tonopah Field Station and Battle Mountain Field Office, January 2007.
- (2) Stone Cabin Complex Wild Horse Gather, Environmental Assessment NV065-EA07-028, Department of the Interior, Bureau of Land Management, Tonopah Field Station and Battle Mountain Field Office, January 2007. Background, Sec.1.1, pg. 1, and Sec. 1.2, pg. 3, Appropriate Management Level - Table 1.
- (3) www.blm.gov BLM Wild Horse & Burro Program, Fiscal Year 2006 Herd Statistics.
- (4) Stone Cabin Complex Wild Horse Gather, Environmental Assessment NV065-EA07-028, Department of the Interior, Bureau of Land Management, Tonopah Field Station and Battle Mountain Field Office, January 2007. Grazing Management, pg. 16. Sec. 3.2, Table 5, Grazing Use Within The Stone Cabin Complex.
- (5) Tonopah Field Station, Stone Cabin Complex, Final Gather Report, Gather Summary 2007. Courtesy of Susie Stokke, BLM Nevada Lead Wild Horse and Burro Specialist.
- (6) Based on figures provided in An Economic Analysis of Alternative Fertility Control and Associated Management Techniques for Three BLM Wild Horse Herds by John M. Bartholow. Cost estimates were taken from budget planning spreadsheet supplied by Linda Coates-Markle, BLM/MT (4/29/2003) as interpreted by Don Glenn, BLM/DC (6/17/2003) and Lili Thomas, BLM/NV (9/22/2003). Includes cost of removal, transportation, medical, & assumes 1 year containment with all animals successfully adopted.



**Stone Cabin Wild Horse**

Captured: 02/12/07  
2 Year Old Mare

HMA Acres: 407,543 Acres  
Habitat Loss: -2,539 Acres  
AML: 364  
Acres Per Horse: 1,119  
Removed: 205  
Remaining: 154



**Saulsbury Wild Horse**

Captured: 02/05/07  
5 Year Old Mare

HMA Acres: 135,297 Acres  
Habitat Loss: -8,970 Acres  
AML: 40  
Acres Per Horse: 3,382  
Removed: 131  
Remaining: 27

Photos taken from BLM  
Internet Adoption Websites.  
HMA & AML Statistics from  
BLM FY06 Herd Statistics.

Research, Data & Statistics  
Compiled by C.R. Mac Donald  
June 2007 sacredintent@cox.net