



# United States Department of the Interior



## BUREAU OF LAND MANAGEMENT

Surprise Field Office  
602 Cressler Street  
Cedarville, CA 96104  
www.ca.blm.gov/surprise

In Reply Refer To:  
4700 (CA-370) P

**RECEIVED**

SEP 12 2005

DEPARTMENT OF ADMINISTRATION  
OFFICE OF THE DIRECTOR  
BUDGET AND PLANNING DIVISION

September 7, 2005

### NOTICE OF PROPOSED ACTION

**STATE:** Nevada

**COUNTY:** Washoe

**FIELD OFFICE:** Surprise Field Office

**PROPOSED ACTION:** Gather wild horses from the Wall Canyon East, Nut Mountain, and Bitner Herd Management Areas (HMAs)

**WILDERNESS AREA:** East Fork High Rock Canyon Wilderness Area, and Massacre Rim Wilderness Study Area.

#### Background

The Appropriate Management Levels for wild horses in the Wall Canyon East, Nut Mountain, and Bitner Herd Management Areas is established at 60–100 wild horses by environmental assessment #CA-028-93-03. These Appropriate Management Levels (AMLs) were also affirmed by an Interior Board of Land Appeals decision. The current population is estimated at 281 wild horses for the three herd management areas.

Approximately 18% or 14,125 acres of East Fork High Rock Canyon Wilderness Area occurs within the Wall Canyon East and Nut Mountain HMAs, and 89% or 42,290 acres of the Bitner Herd Management Area is within of Massacre Rim Wilderness Study Area (WSA) (see attached maps).

#### Description of the Proposed Action

The Surprise Field Office proposes to gather approximately 240 wild horses and to remove approximately 220 wild horses from the above mentioned HMAs. This gather would maintain horses within AMLs and would be completed using a helicopter. Gathering facilities would be located outside of wilderness or WSA boundaries and is scheduled during November, 2005. An environmental assessment analyzing potential effects of capturing wild horses within the herd management areas will be completed prior to gather operations.

If you have comments on this proposed activity please contact Owen Billingsley, Field Manager at the address above, or at 530-279-6101. The comment period for this notice will close on October 14, 2005.

Sincerely,

A handwritten signature in black ink that reads "Owen Billingsley". The signature is written in a cursive, flowing style.





Owen Billingsley  
Surprise Field Manager

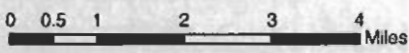
Attachments:

Wall Canyon East and Nut Mountain gather area map  
Bitner gather area map

**BLM Surprise Field Office  
Wall Canyon/Nut Mountain  
Gather Area**



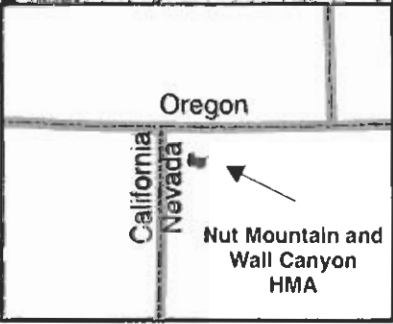
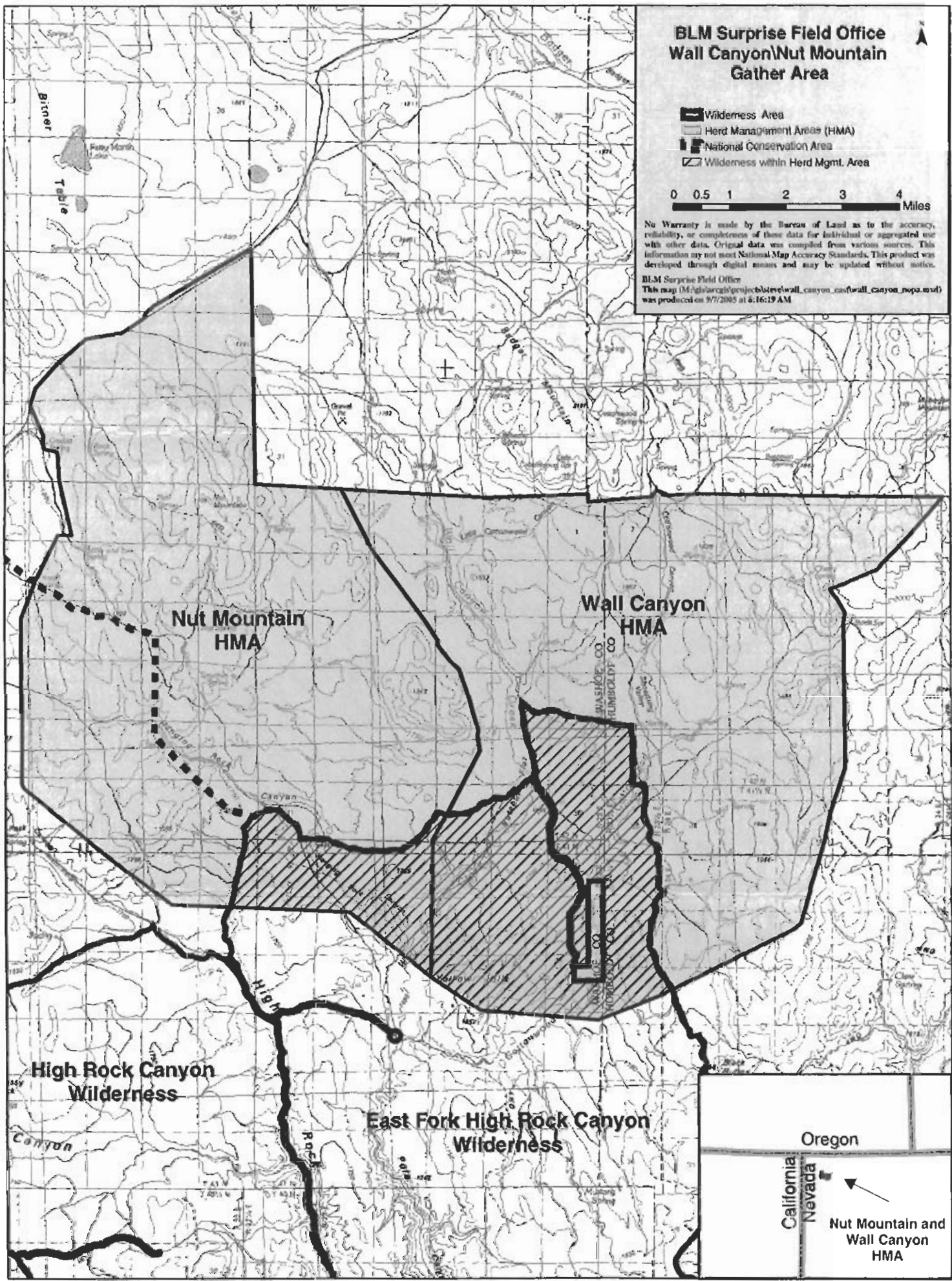
-  Wilderness Area
-  Herd Management Areas (HMA)
-  National Conservation Area
-  Wilderness within Herd Mgmt. Area



No Warranty is made by the Bureau of Land as to the accuracy, reliability, or completeness of these data for individual or aggregated use with other data. Original data was compiled from various sources. This information may not meet National Map Accuracy Standards. This product was developed through digital means and may be updated without notice.

BLM Surprise Field Office  
This map (M:\gis\arcgis\project\blm\wall\_canyon\_nutmountain\wall\_canyon\_nutmountain.mxd) was produced on 9/7/2005 at 8:16:19 AM

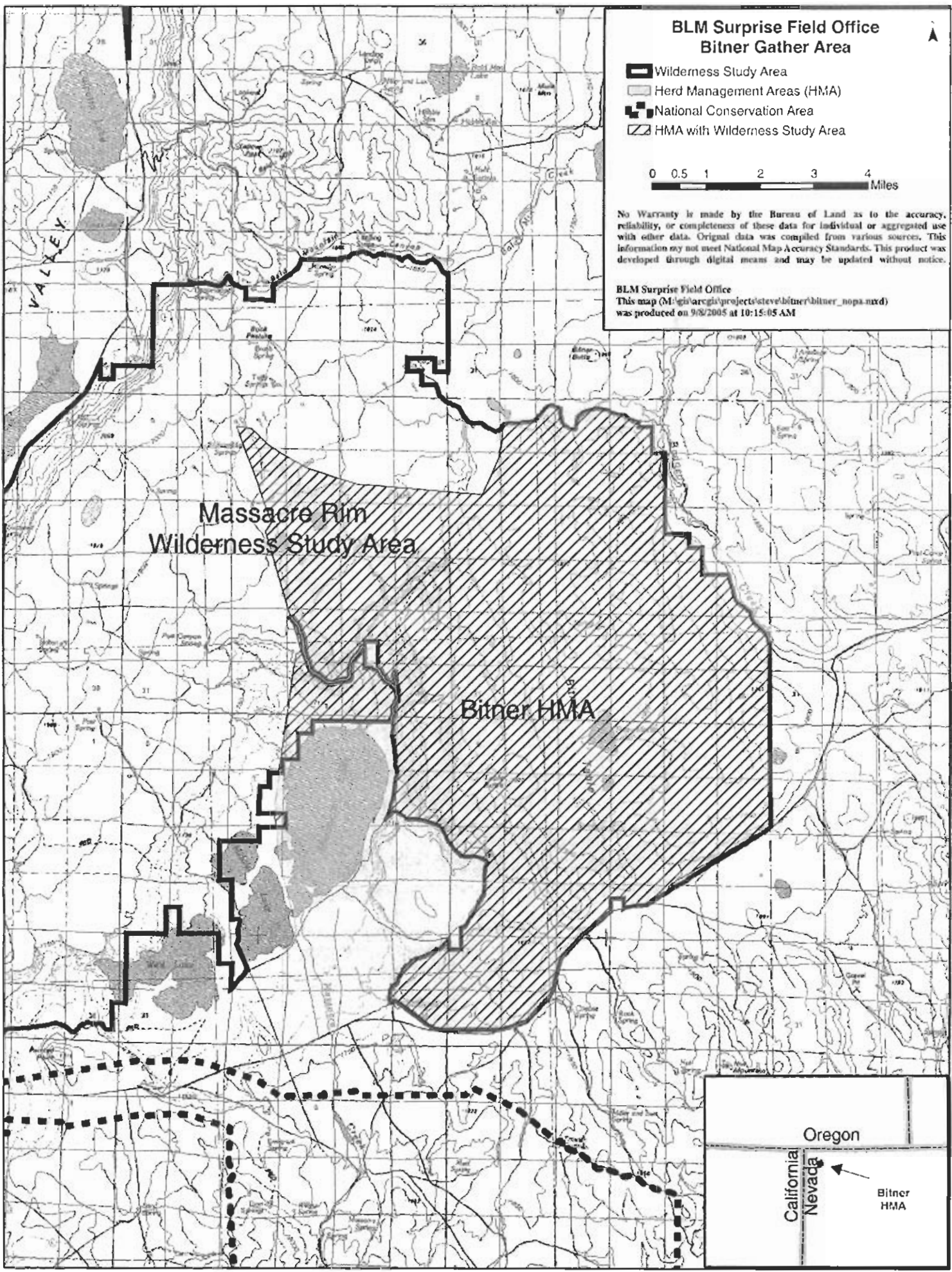
T44N  
T43N  
T42N  
T41N  
10.5N



R22E      R22.5E      R23E      R24E

T46N  
T45N  
T44N  
T43N  
T42N

R20E R21E R22E R23E



**BLM Surprise Field Office  
Bitner Gather Area**

- Wilderness Study Area
- Herd Management Areas (HMA)
- National Conservation Area
- HMA with Wilderness Study Area

0 0.5 1 2 3 4 Miles

No Warranty is made by the Bureau of Land as to the accuracy, reliability, or completeness of these data for individual or aggregated use with other data. Original data was compiled from various sources. This information may not meet National Map Accuracy Standards. This product was developed through digital means and may be updated without notice.

BLM Surprise Field Office  
This map (M:\gis\arcgis\projects\stev\bitner\bitner\_nopa.mxd)  
was produced on 9/8/2005 at 10:15:05 AM

