

## Herd Areas and Herd Management Areas

The Bureau of Land Management (BLM) in California manages 15.2 million acres of public land, with an additional 1.6 million acres in Northwestern Nevada. The Free Roaming Wild Horse and Burro population covers 7.1 acres of this land with an additional 2.3 million acres of non-BLM land. Populations of both wild horses and burros exist in California. When the appropriate management level is reached there will be 1,746 horses and 453 burros on the California ranges.

Herd Areas (HAs) are those geographic areas where wild horses and/or burros were found at the passage of the Wild Horse and Burros Act in 1971. Herd Management Areas (HMAs) are those areas within Herd Areas where the decision has been made, through Land Use Plans, to manage for populations of wild horses and/or burros. There are 33 Herd Areas and 22 Herd Management Areas within California.

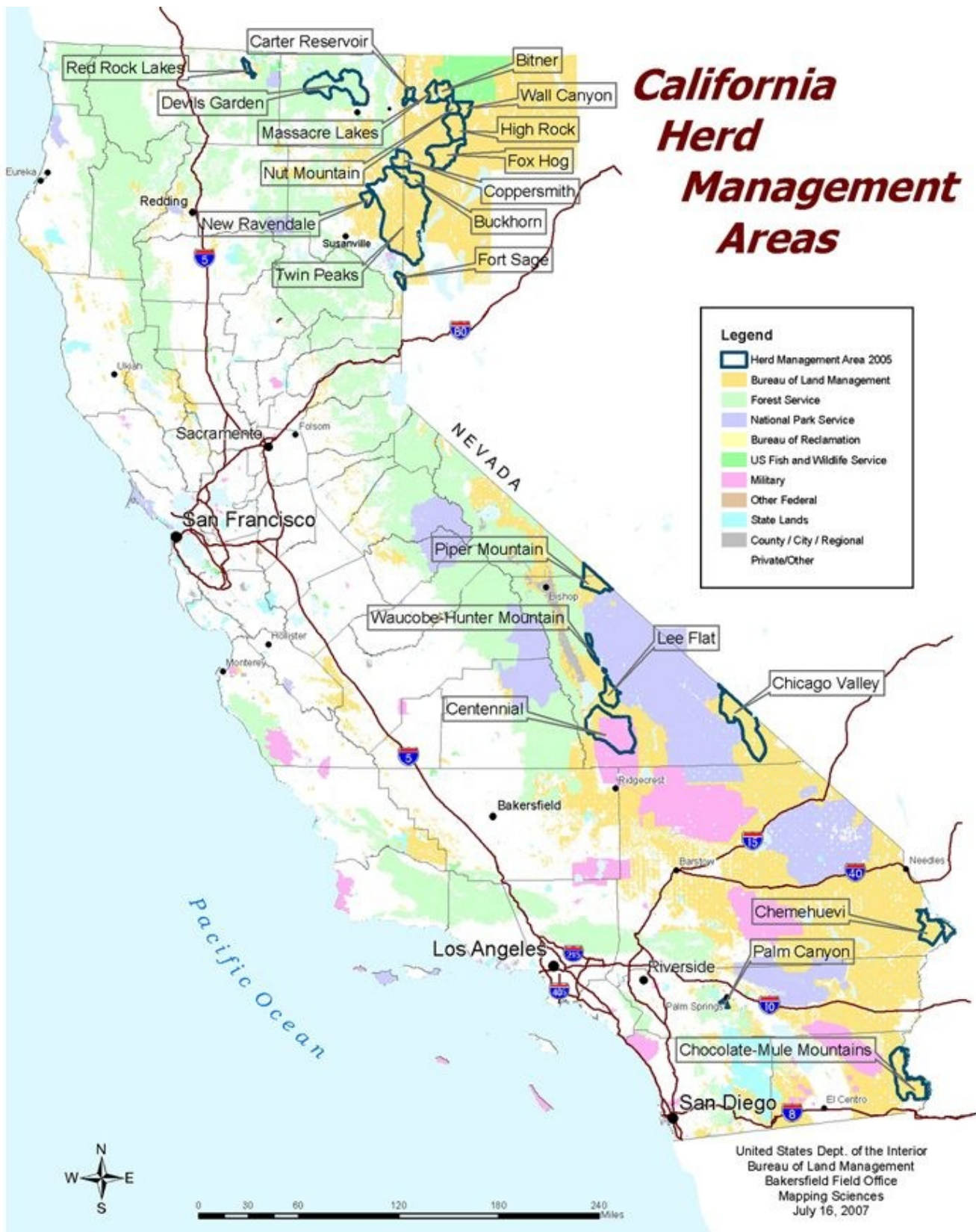
Each Herd Management Area has an Appropriate Management Level (AML) that states the minimum and maximum number of animals that can inhabit an area. Appropriate Management Levels have been determined through rangeland monitoring studies, taking into consideration other natural resources such as vegetation and wildlife, and other uses such as livestock grazing and recreation on the public lands.

The overall goal is to preserve the health of the land and water resources by managing wild horse and burro populations so as to restore and maintain a thriving ecological balance. Wild horse and burro populations are managed through periodic removals. Excess animals from the removals are offered to the public through the Bureau of Land Management's Adopt a Horse or Burro Program.

### **Herd Management Areas**

Bitner CA-267	Buckhorn CA-262	Carter Reservoir CA-269	Centennial CA-654
Chemehuevi CA-698	Chicago Valley CA-681	Chocolate Mule Mountains CA-671	Coppersmith CA-261
Devils Garden CA-252	Fort Sage CA-241	Fox Hog CA-263	High Rock CA-264
Lee Flat CA-652	Massacre Lakes CA-268	New Ravendale CA-243	Nut Mountain CA-266
Palm Canyon CA-662 Wall Canyon CA-265	Piper Mountain CA-656	Red Rock Lakes CA-251	Twin Peaks CA-242
Waucoba-Hunter Mountain CA-651			

# California Herd Management Areas



[Download PDF copy of this map](#)

## **Bitner Herd Management Area (CA-267)**

**LOCATION:** The Bitner Herd Management Area lies in the northern Washoe County, NV approximately 40 miles east of Cedarville, CA.

**ACREAGE:** 50,500 acres are managed for wild horses.

**ELEVATION:** 5,600 feet to 6,900 feet

**TOPOGRAPHY/VEGATATION:** The Bitner Table makes up two-thirds of the area and wraps around the Massacre Lakes Basin which is a large alkali lake bed. Vegetation consists primarily of big and low sage, with an understory of bluegrass, squirreltail, needlegrass, bluebunch wheatgrass and Idaho fescue.

**WILDLIFE:** Wildlife consists of pronghorn, mule deer and sage grouse.

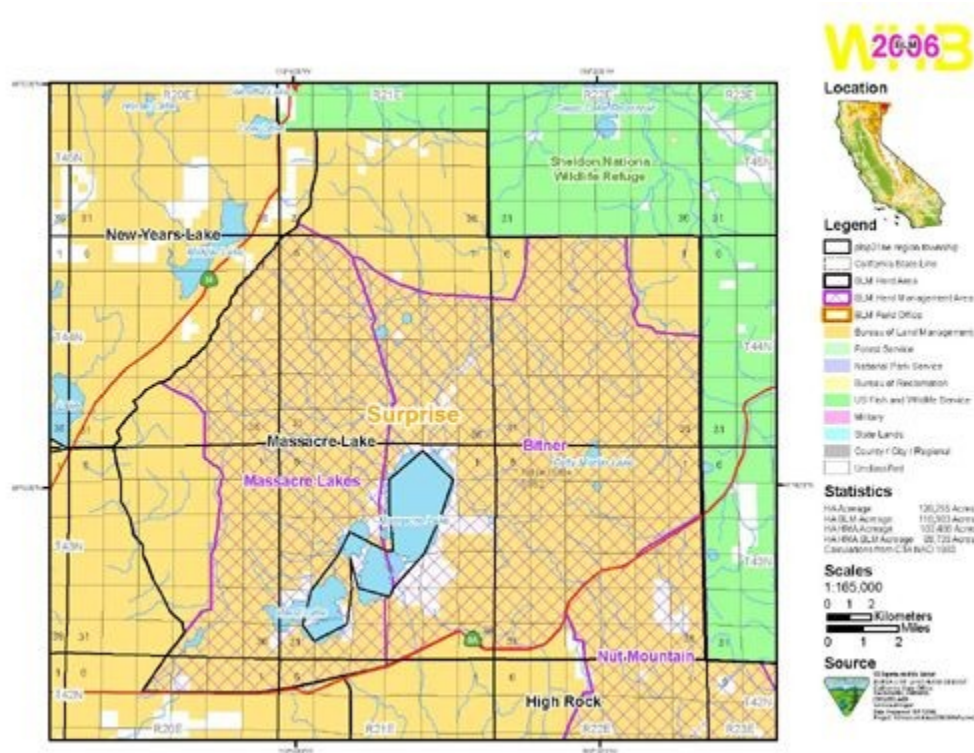
**HERD SIZE:** 15 to 25 head

**HORSE COLORS:** Blacks and bays with some piebald

**SIZE OF HORSES:** 14-16 hands and 900-1100 pounds

**HISTORY:** The horses in this area likely originated from historic ranching operations.





[Click for higher resolution PDF image.](#)

## Buckhorn Herd Management Area (CA-262)

**LOCATION:** The Buckhorn Herd Management Area is located 40 miles southwest of Cedarville, CA in Lassen County, CA and Washoe County, NV.

**ACREAGE:** 65,000 acres are managed for wild horses

**ELEVATION:** 5,000 feet to 8,000 feet

**TOPOGRAPHY/VEGATATION:** The area is rough and steep with rocky tablelands and a few alkali lakebeds. Dominant vegetation consists of juniper, bitterbrush, big and low sage with bluegrass and an understory of squirreltail, needlegrass and Idaho fescue.

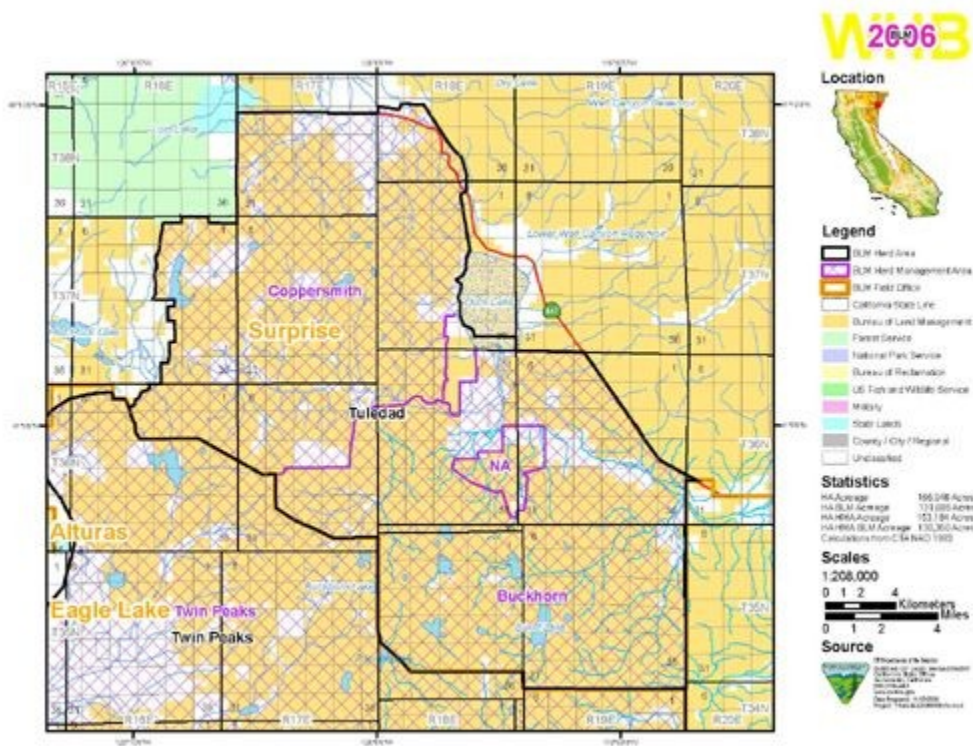
**WILDLIFE:** Wildlife occurring in the area includes pronghorn, mule deer, chukar and sage grouse.

HERD SIZE: 59 to 85 head

HORSE COLORS: Browns and bays

SIZE OF HORSES: 14-16 hands and 900-1100 pounds

HISTORY: This area contains horses thought to originate from Spanish stock diluted with ranch stock and US Cavalry remounts prior to and during World War I. The influence of the US Cavalry remounts program is especially apparent in these horses.



[Click for higher resolution PDF image.](#)

## **Carter Reservoir Herd Management Area (CA-269)**

**LOCATION:** The Carter Reservoir Herd Management Area is located in Washoe County, NV with a small portion in Modoc County, CA.

**ACREAGE:** 23,000 acres are managed for wild horses

**ELEVATION:** 4,900 feet to 6,600 feet

**TOPOGRAPHY/VEGATATION:** Topography in this HMA ranges from gently rolling hills to steep rocky slopes. Juniper occurs in the higher elevations. Other vegetation includes big and low sage with bluegrass, squirreltail, needlegrass and Idaho fescue.

**WILDLIFE:** Pronghorn, mule deer, and chukar are the dominant wildlife species.

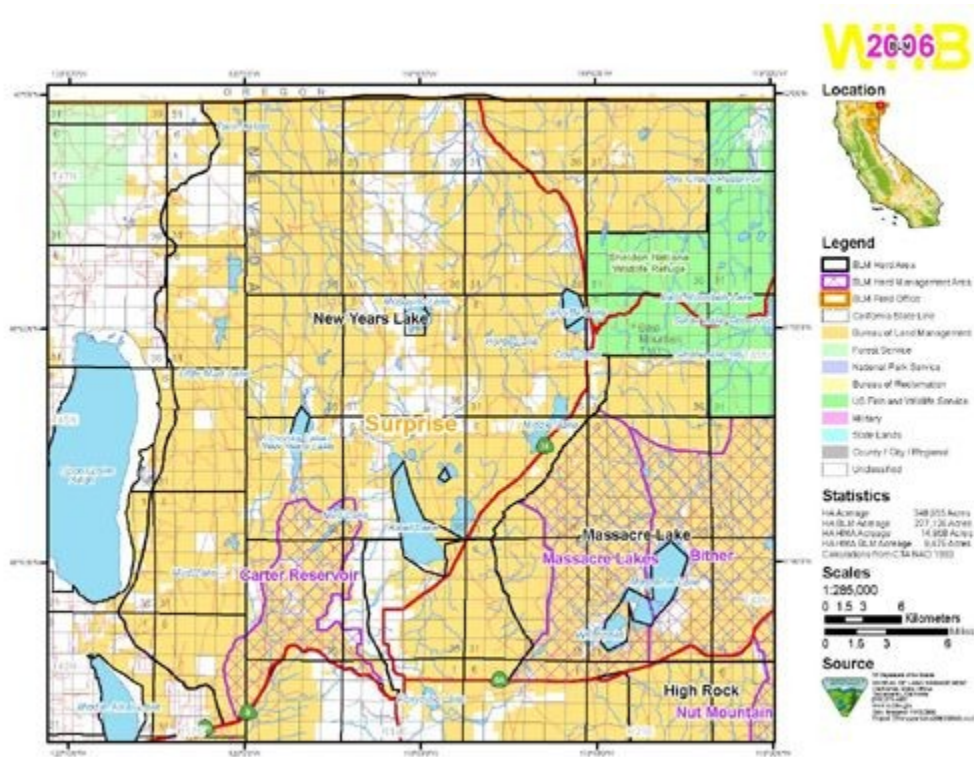
**HERD SIZE:** 25 to 35 head

**HORSE COLORS:** Dun, Blue Corn and Grulla with dorsal stripes, barred or striped legs and dark points

**SIZE OF HORSES:** 14-16 hands and 900-1100 pounds

**HISTORY:** This area contains horses thought to originate from Spanish stock. Long thick manes and tails along with the distinctive markings are all signs of the old Spanish stock.





[Click for higher resolution PDF image.](#)

## Centennial Herd Management Area (CA-654)

**LOCATION:** The Centennial Herd Management Area is located in Kern County, CA approximately 10 miles north of Ridgecrest, CA.

**ACREAGE:** 319,000 acres are managed for wild horses

**ELEVATION:**

**TOPOGRAPHY/VEGATATION:**

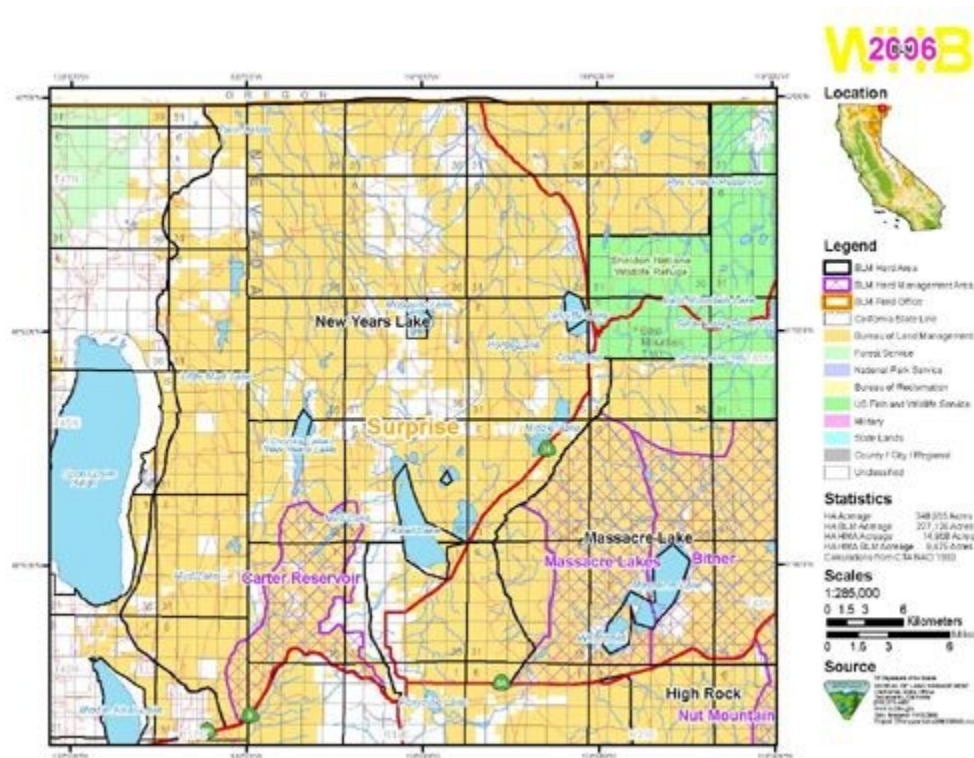
**WILDLIFE:**

**HERD SIZE:** 168 head

**HORSE COLORS:** Gray, brown and bay

**SIZE OF HORSES:** 14-16 hands and 900-1100 pounds

**HISTORY:** This area contains horses thought to be from ranching stock.



[Click for higher resolution PDF image.](#)

## Chemehuevi Herd Management Area (CA-698)

**LOCATION:** The Chemehuevi Herd Management Area is located in eastern San Bernardino County, CA and encompasses an area from 7 miles south of Needles, CA to the Parker Dam and includes land east of U.S. 95 eastward to the Colorado River.

**ACREAGE:** 79,000 acres are managed for wild burros

**ELEVATION:**

**TOPOGRAPHY/VEGATATION:**

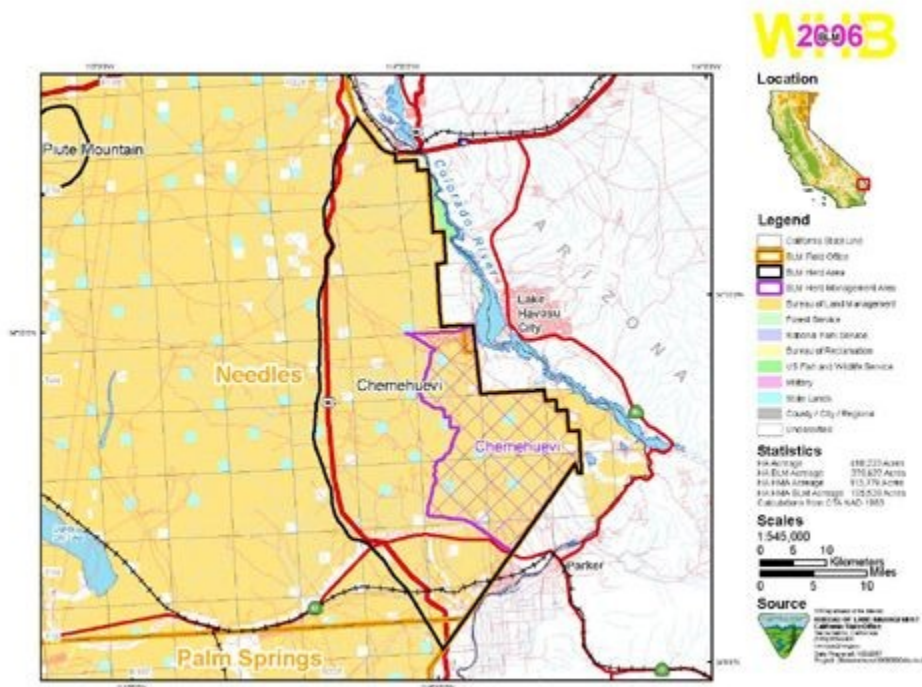
**WILDLIFE:**

**HERD SIZE:** 108 head

**BURRO COLORS:** Gray, blue, black and pink

**SIZE OF HORSES:** 11 to 12 hands and 500-600 pounds

**HISTORY:** The burros in this area are believed to have originated from mining operations in the 1800's. With introduction of the railroad in this area the miners abandoned their animals into the foothills.



[Click for higher resolution PDF image.](#)

## Chicago Valley Herd Management Area (CA-681)

**LOCATION:** The Chicago Valley Herd Management Area is located in southeastern Inyo County, CA along the California/Nevada border near Death Valley Junction.

**ACREAGE:** 278,000 acres are managed for wild horses

**ELEVATION:**

**TOPOGRAPHY/VEGATATION:**

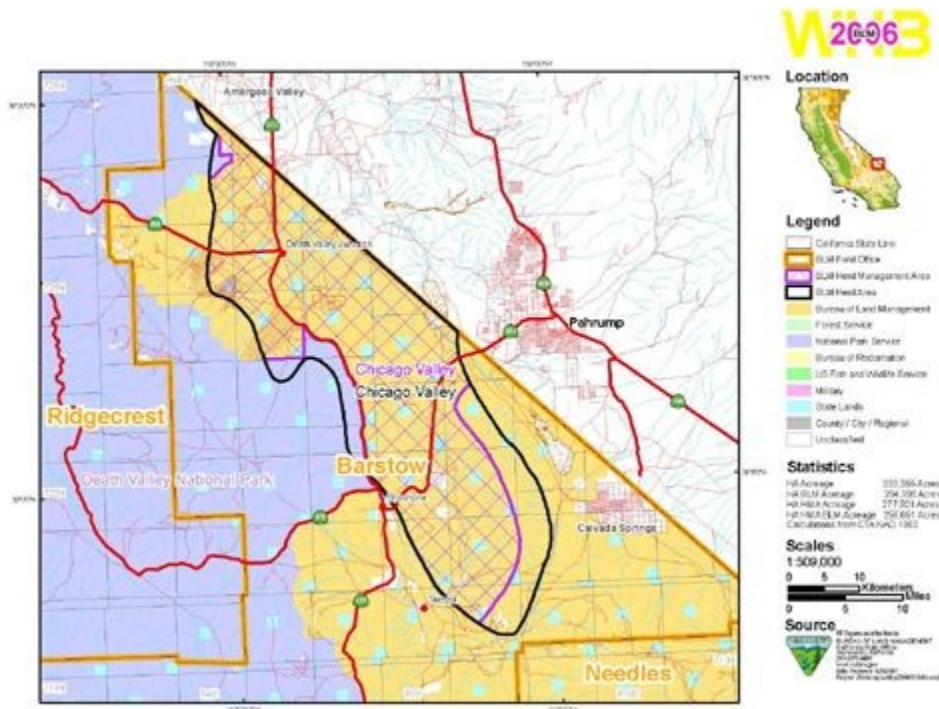
**WILDLIFE:**

**HERD SIZE:** 12 head

**HORSE COLORS:** Bay and Brown

**SIZE OF HORSES:** 14-16 hands and 900-1100 pounds

**HISTORY:** The horses in this area are believed to have originated from ranching operations.



[Click for higher resolution PDF image.](#)

## Chocolate Mule Mountains Herd Management Area (CA-671)

**LOCATION:** The Chocolate Mule Mountains Herd Management Area is located in southeastern Imperial County, CA along the Colorado River bordering the Picacho State Recreation Area west of Yuma, AZ.

**ACREAGE:** 159,000 acres are managed for wild burros

**ELEVATION:**

**TOPOGRAPHY/VEGATATION:**

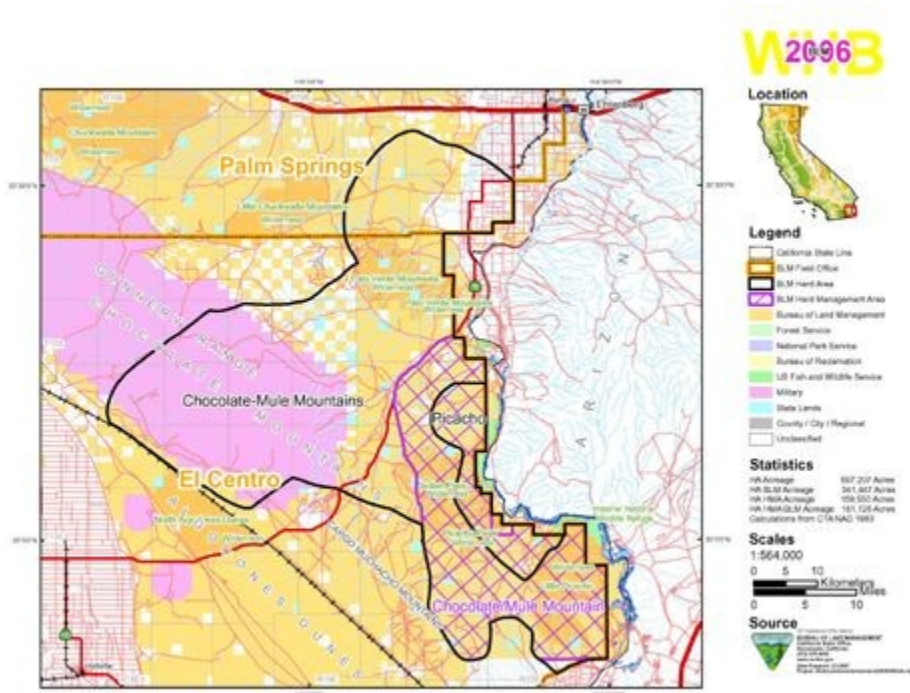
**WILDLIFE:**

**HERD SIZE:** 121 head

**BURRO COLORS:** Gray, Blue, and Black

**SIZE OF HORSES:** 10-11 hands and 400-600 pounds

**HISTORY:** The wild burros were introduced to this area in the mid-1800s when mining was at its' highest. As the miners abandoned their miners they turned the burros out to fend for themselves.



[Click for higher resolution PDF image.](#)

## **Coppersmith Herd Management Area (CA-261)**

**LOCATION:** The Coppersmith Herd Management Area is located 30 miles southeast of Cedarville, CA in Lassen County, CA and Washoe County, NV.

**ACREAGE:** 70,500 acres are managed for wild horses

**ELEVATION:** 5,000 feet to 8,000 feet

**TOPOGRAPHY/VEGATATION:** The topography consists of rough and steep rocky tablelands. Dominant vegetation includes Juniper, bitterbrush, big and low sage with bluegrass and an understory of squirreltail, Idaho fescue and needlegrasses.

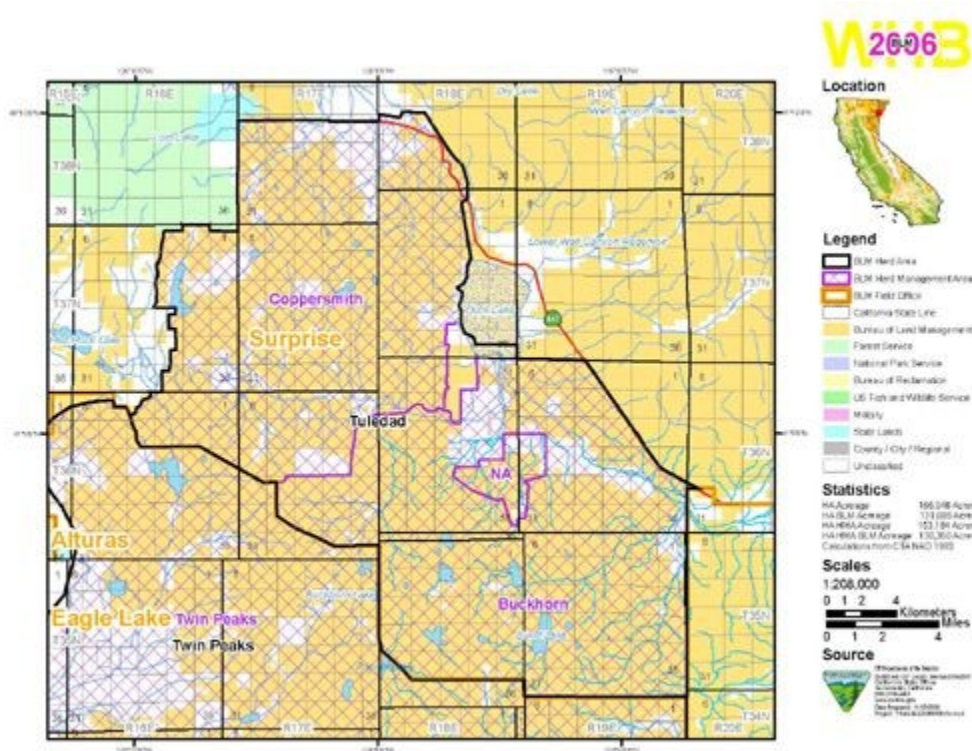
**WILDLIFE:** Dominant wildlife in the area includes pronghorn, mule deer, sage grouse, chukar and quail.

**HERD SIZE:** 50 - 75 head

**HORSE COLORS:** Bay, Black and Brown

**SIZE OF HORSES:** 14-16 hands and 900-1100 pounds

**HISTORY:** This area contains horses thought to originate from Spanish stock diluted with ranch stock and US Cavalry remounts prior to and during World War I. Many of the horses in this area have characteristics common to Morgans and Quarter Horses.



[Click for higher resolution PDF image.](#)

## Devils Garden Wild Horse Territory Herd Management Area (CA-252)

**LOCATION:** The Devils Garden Wild Horse Territory is located 5 miles north of Alturas, CA in northern Modoc County, CA.

**ACREAGE:** 285,000 acres are managed for wild horses

ELEVATION: 4,800 feet to 5,750 feet

TOPOGRAPHY/VEGATATION: Terrain consists of a plateau with rolling hills and mountains. Vegetation includes sagebrush/grass, juniper in stands or scattered and east side pine with an understory of bitterbrush. In some areas, there are large expanses of mountain mahogany.

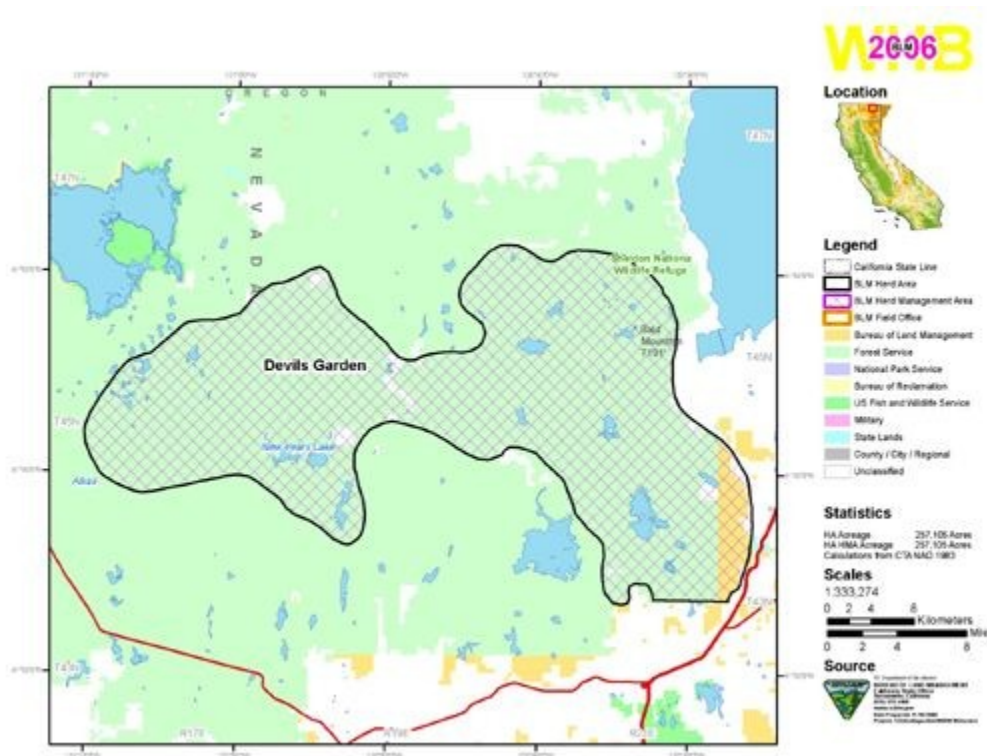
WILDLIFE: Wildlife in the area includes elk, mule deer, mountain lions, coyotes, bobcats, antelope, various rodents and many different species of birds.

HERD SIZE: 325 head

HORSE COLORS: Bay, Black and Brown

SIZE OF HORSES: 15-16 hands and 900-1200 pounds

HISTORY: Many of the wild horses in this area exhibit draft horse characteristics and are thought to have descended from draft horse stock used on area farms and ranches, however some areas are dominated by animals with light horse breed characteristics. The US Forest Service provides management lead on this territory, with the Bureau of Land Management conducting the gathering operations and placement of animals into the adoption program.



[Click for higher resolution PDF image.](#)

### **Fort Sage Herd Management Area (CA-241)**

LOCATION: The Fort Sage Herd Management Area is located approximately 40 miles southwest of

Susanville, CA just east of the town of Doyle, CA.

ACREAGE: 15,000 acres are managed for wild horses

ELEVATION: 4,000 feet to 8,000 feet

TOPOGRAPHY/VEGATATION: The terrain is generally mountainous and steep. Dominant vegetation in the area consists of sagebrush, bitterbrush, needlegrass, and bluebunch wheatgrass.

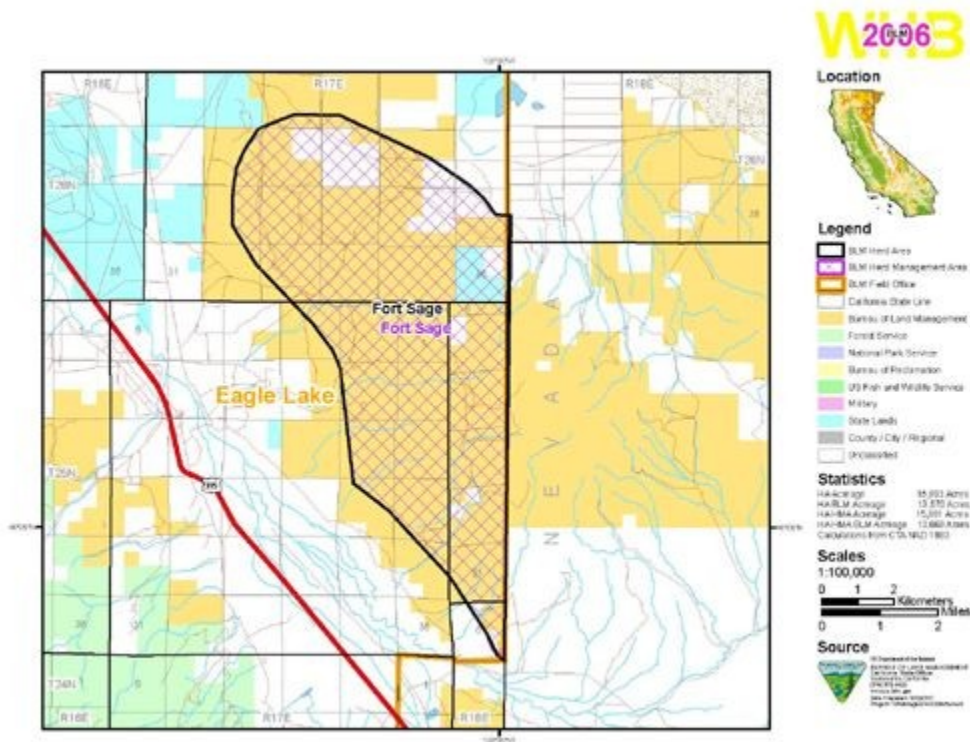
WILDLIFE: Major wildlife species in the area include mule deer, chukar and quail.

HERD SIZE: 65 head

HORSE COLORS: Bay, Black and Brown

SIZE OF HORSES: 14-16 hands and 900-1200 pounds

HISTORY: The horses in this area likely originated from domestic stock from area farms and ranches. This area is managed in cooperation with the Bureau of Land Management's Carson City, NV office.



[Click for higher resolution PDF image.](#)

### **Fox Hog Herd Management Area (CA-263)**

LOCATION: The Fox Hog Herd Management Area is located approximately 45 miles southwest of Cedarville, CA in Washoe County, NV.

ACREAGE: 119,000 acres are managed for wild horses

ELEVATION: 5,300 feet to 8,000 feet

TOPOGRAPHY/VEGATATION: Topography consists of rolling mountains with large plateaus. Vegetation consists of big and low sage with squirreltail, Idaho fescue and bluegrass in the understory.

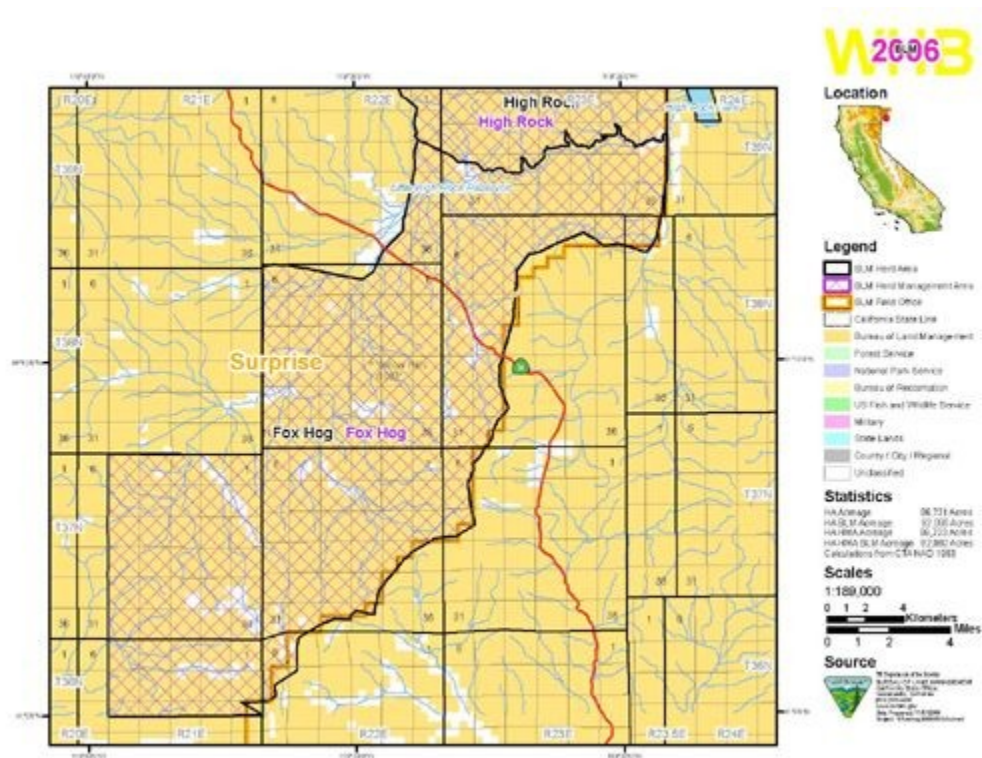
WILDLIFE: Pronghorn, chukar and sage grouse are the major wildlife species. Bighorn sheep also occur at the north end of the HMA.

HERD SIZE: 120 to 220 head

HORSE COLORS: Bay, Black and Brown

SIZE OF HORSES: 14-16 hands and 900-1200 pounds

HISTORY: The area contains horses from a variety of breeds with some displaying draft horse characteristics.



[Click for higher resolution PDF image.](#)

## High Rock Herd Management Area (CA-264)

LOCATION: The High Rock Herd Management Area is located approximately 45 miles north of Gerlach, NV and 45 miles south east of Cedarville, CA. The area is entirely in Washoe County, NV. The area is managed as two separate home ranges each having an appropriate management level.

ACREAGE: 115,000 acres are managed for wild horses

ELEVATION: 5,000 feet to 7,000 feet

TOPOGRAPHY/VEGATATION: Five deep canyons dissect the surrounding tablelands. Vegetation consists of big and low sage with bluegrass, squirreltail and needlegrass. Great Basin wild rye is common in the bottom of the High Rock Canyon.

WILDLIFE: Pronghorn, bighorn sheep, chukar, sage grouse and mule deer are common in the area.

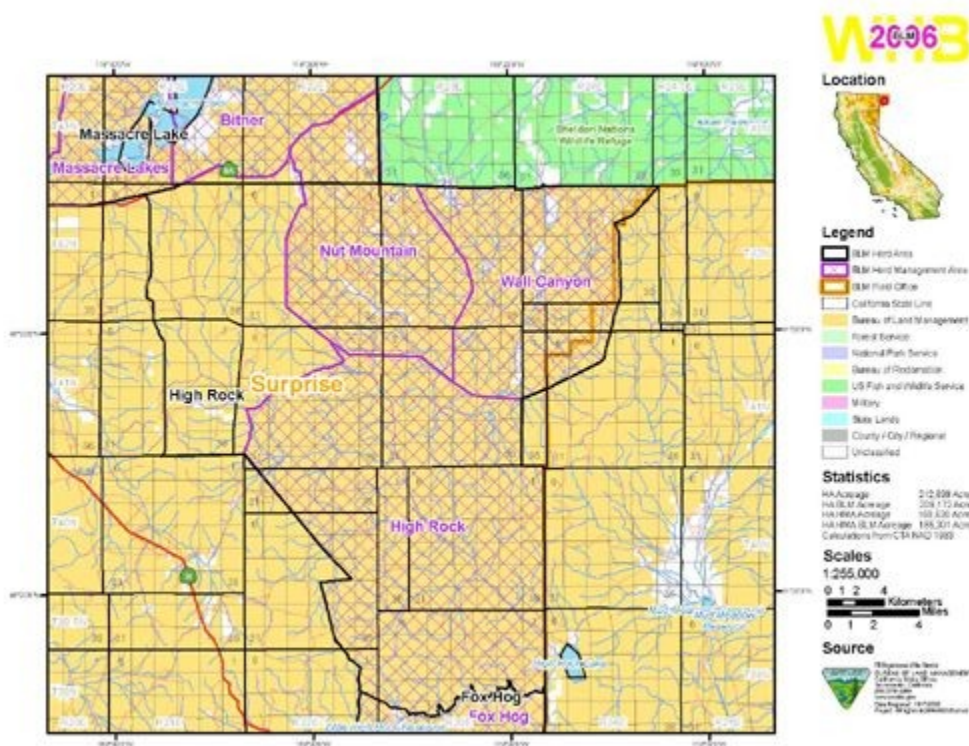
HERD SIZE: 30 to 40 head for the East Canyon Home Range

48 to 80 head for the Little High Rock Home Range

HORSE COLORS: Sorrels and Palomino Pintos

SIZE OF HORSES: 14-16 hands and 900-1100 pounds

HISTORY: Some of the horses in this herd exhibit Spanish mustang characteristics.



[Click for higher resolution PDF image.](#)

## Lee Flat Herd Management Area (CA-652)

LOCATION: The Lee Flat Herd Management Area is located east of the Owens Dry Lake bed in Inyo County, CA.

ACREAGE: 73,000 acres are managed for wild burros

ELEVATION:

TOPOGRAPHY/VEGATATION:

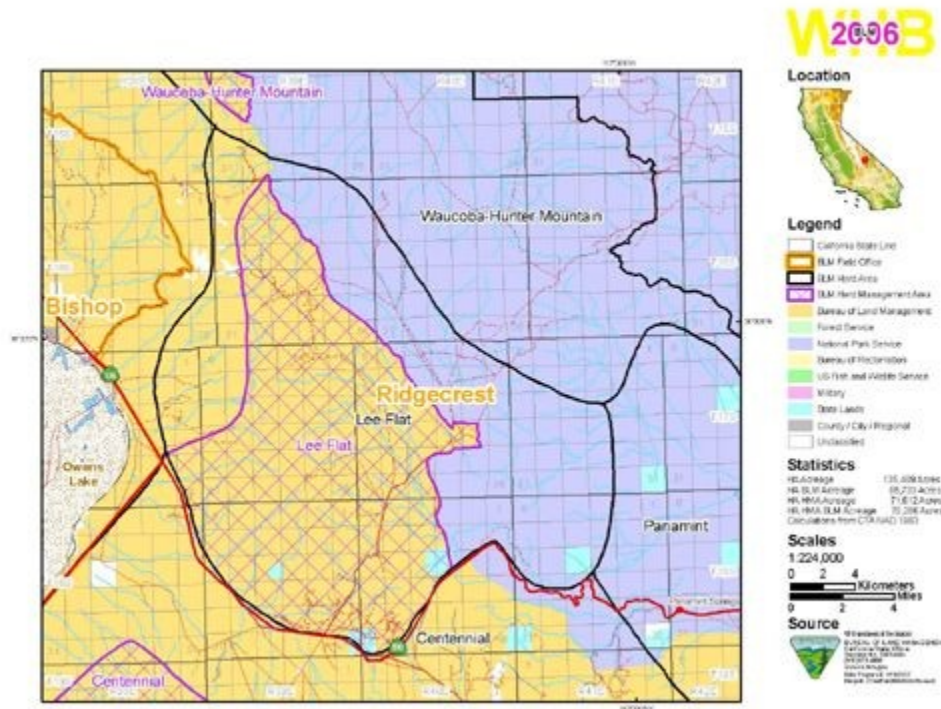
WILDLIFE:

HERD SIZE: 15 head

BURRO COLORS: Gray

SIZE OF HORSES: 10-11 hands and 400-600 pounds

HISTORY: The burros in this area are believed to from mining operations in the mid-1800s.



[Click for higher resolution PDF image.](#)

## Massacre Lakes Herd Management Area (CA-268)

LOCATION: The Massacre Lakes Herd Management Area lies in northern Washoe County, NV. It is approximately 30 miles east of Cedarville, CA.

ACREAGE: 40,700 acres are managed for wild horses

ELEVATION: 5,000 feet to 6,800 feet

TOPOGRAPHY/VEGATATION: The northern two-thirds of the HMA has a gentle slope with a southern aspect dissected by shallow drainage courses. The southern third of the HMA is a shallow alkali lake. Vegetation consists primarily of juniper and low sage with bluegrass, squirreltail and

needlegrass in the understory.

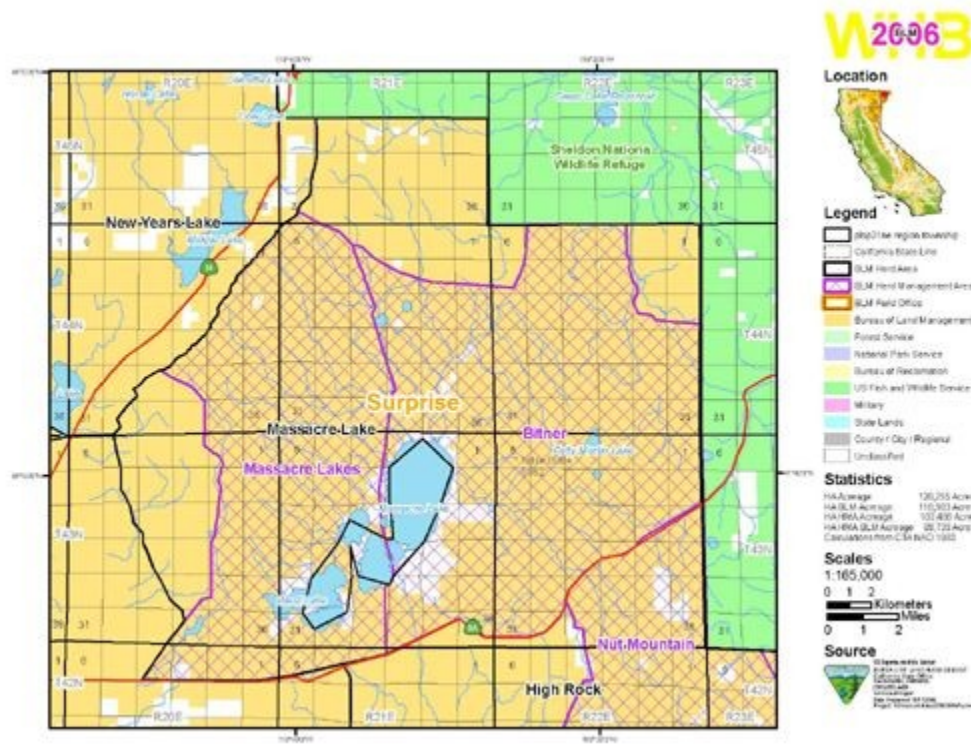
WILDLIFE: Pronghorn, mule deer and sage grouse are common in the area.

HERD SIZE: 20 head

HORSE COLORS: Sorrels and Bays

SIZE OF HORSES: 14-16 hands and 900-1100 pounds

HISTORY: The horses in this area likely originated from historical ranching stock.



[Click for higher resolution PDF image.](#)

## **New Ravendale Herd Management Area (CA-243)**

LOCATION: The New Ravendale Herd Management Area is located near the town of Ravendale, CA in Lassen County, CA and is bordered on the east by Highway 395.

ACREAGE: 27,500 acres are managed for wild horses

ELEVATION: 5,300 feet to 6,000 feet

TOPOGRAPHY/VEGATATION: Terrain consists of rolling hills with sagebrush/juniper/grass type vegetation. Mountain mahogany occurs in patched, generally on north slopes.

**WILDLIFE:** Wildlife in the area includes mule deer, mountain lions, coyote, bob cats, antelope, various rodents and many different species of birds.

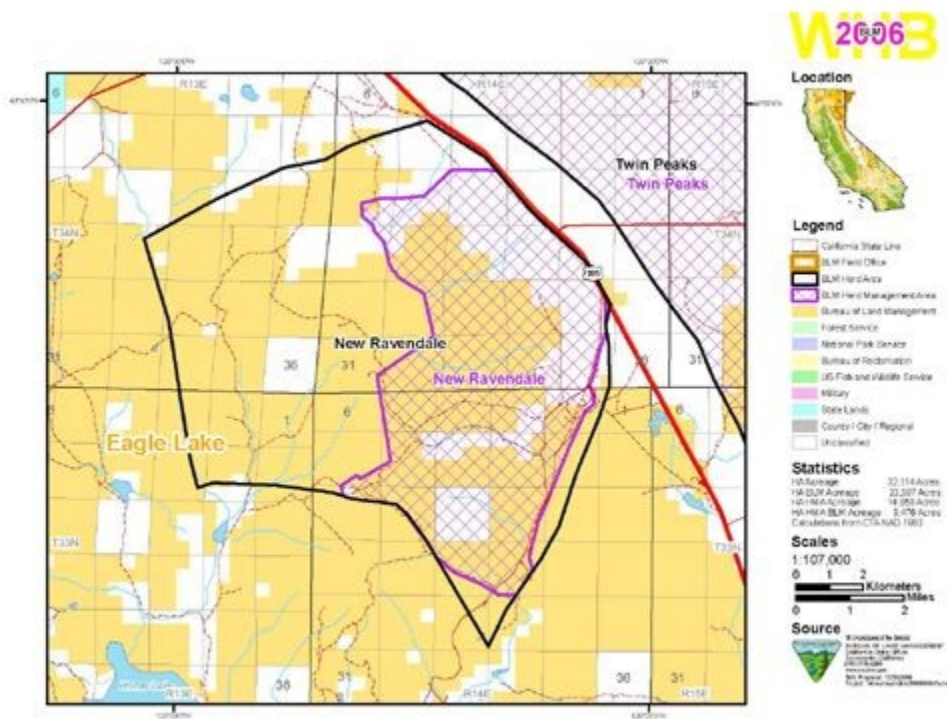
**HERD SIZE:** 25 head

**HORSE COLORS:** Brown and Bay

**SIZE OF HORSES:** 14-16 hands and 900-1100 pounds

**HISTORY:** The wild horses in this area likely originated from historical ranching stock consisting on both draft and light breeds.





[Click for higher resolution PDF image.](#)

## Nut Mountain Herd Management Area (CA-266)

**LOCATION:** The Nut Mountain Herd Management Area is located 40 miles east of Cedarville, CA in Washoe County, NV.

**ACREAGE:** 40,500 acres are managed for wild horses

**ELEVATION:** 5,600 feet to 6,900 feet

**TOPOGRAPHY/VEGATATION:** The area is mainly rolling hills. Areas of big and low sage with bitterbrush dominate the landscape with an understory of bluegrass, squirreltail, Idaho fescue and needlegrass.

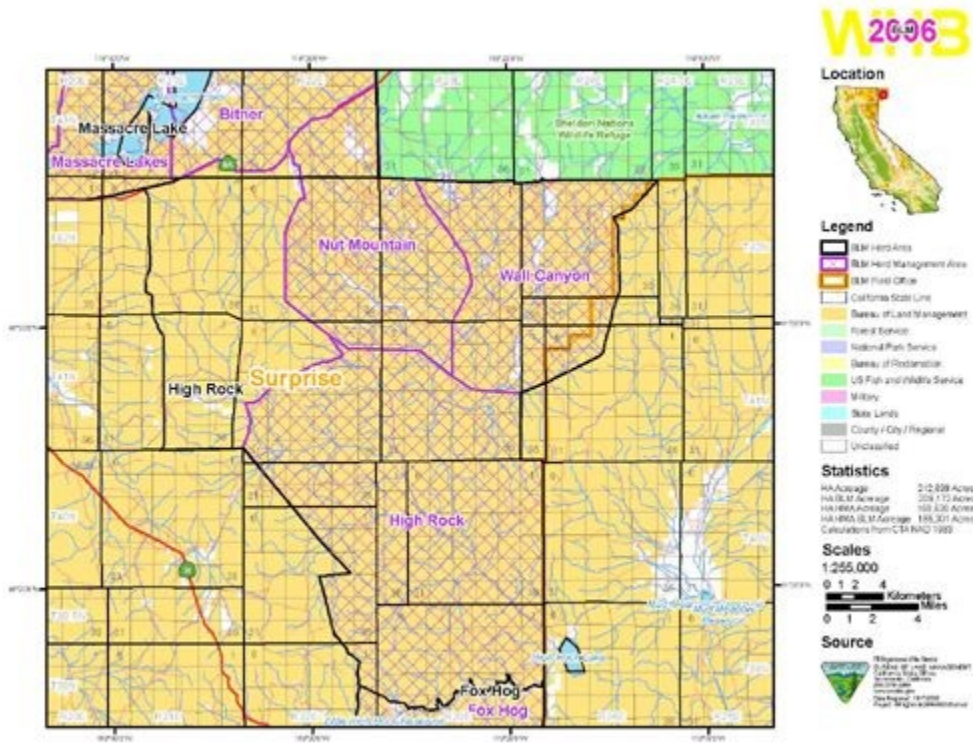
**WILDLIFE:** Dominant wildlife species include pronghorn, mule deer and sage grouse.

**HERD SIZE:** 30 to 55 head

**HORSE COLORS:** Blacks and Bays with some piebalds

**SIZE OF HORSES:** 14-16 hands and 900-1100 pounds

**HISTORY:** The horses in this area likely originated from historical ranching operations.



[Click for higher resolution PDF image.](#)

**Palm Canyon Herd Management Area (CA-662)**

LOCATION: The Palm Canyon Herd Management Area is located in Riverside County, CA southwest of Palm Springs, CA.

ACREAGE: 9,500 acres are managed for wild horses

ELEVATION:

TOPOGRAPHY/VEGATATION:

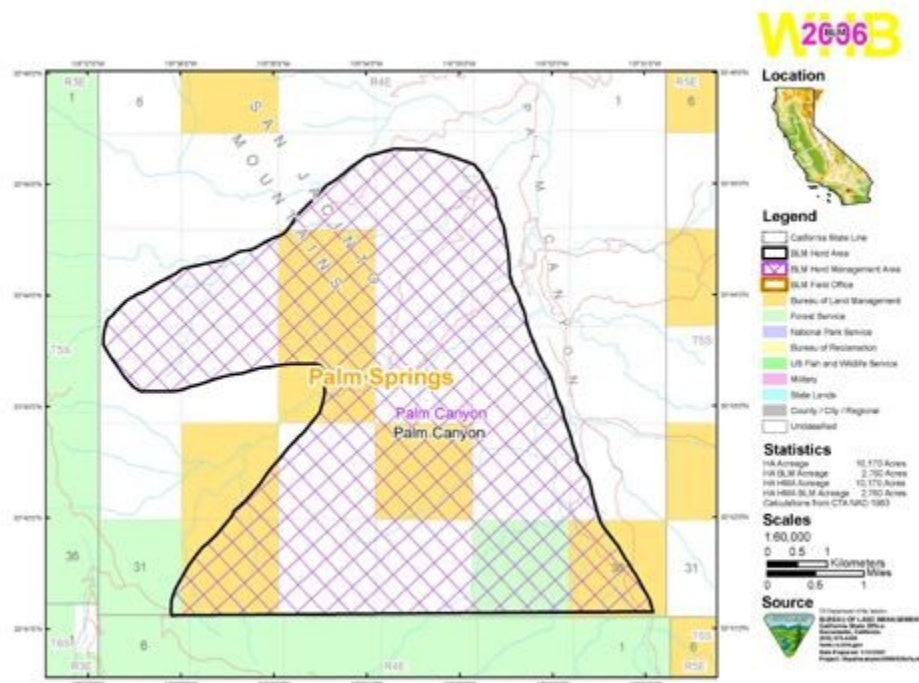
WILDLIFE:

HERD SIZE: 6 head

HORSE COLORS: Browns and Bays

SIZE OF HORSES: 13-14 hands and 800-900 pounds

HISTORY: The horses in this area likely originated from historical ranching stock.



[Click for higher resolution PDF image.](#)

### **Piper Mountain Herd Management Area (CA-656)**

LOCATION: The Piper Mountain Herd Management Area is located in Inyo County, CA approximately 20 miles east of Bishop, CA. The Herd Management Area is bordered on the west side by Highway 168.



ACREAGE: 17,000 acres are managed for wild horses

ELEVATION: 4,600 feet to 6,250 feet

TOPOGRAPHY/VEGATATION: The Red Rock lakes are located at an elevation of 4,600 feet and are the central focus of the wild horse territory. The tope of the ridge, Mahogany Mountain, is 6,250 feet. Vegetation consists of big and lows sage, with an understory of Idaho fescue, squirreltail and needlegrasses. In many areas juniper has increased greatly in density and understory shrubs and grass species are absent.

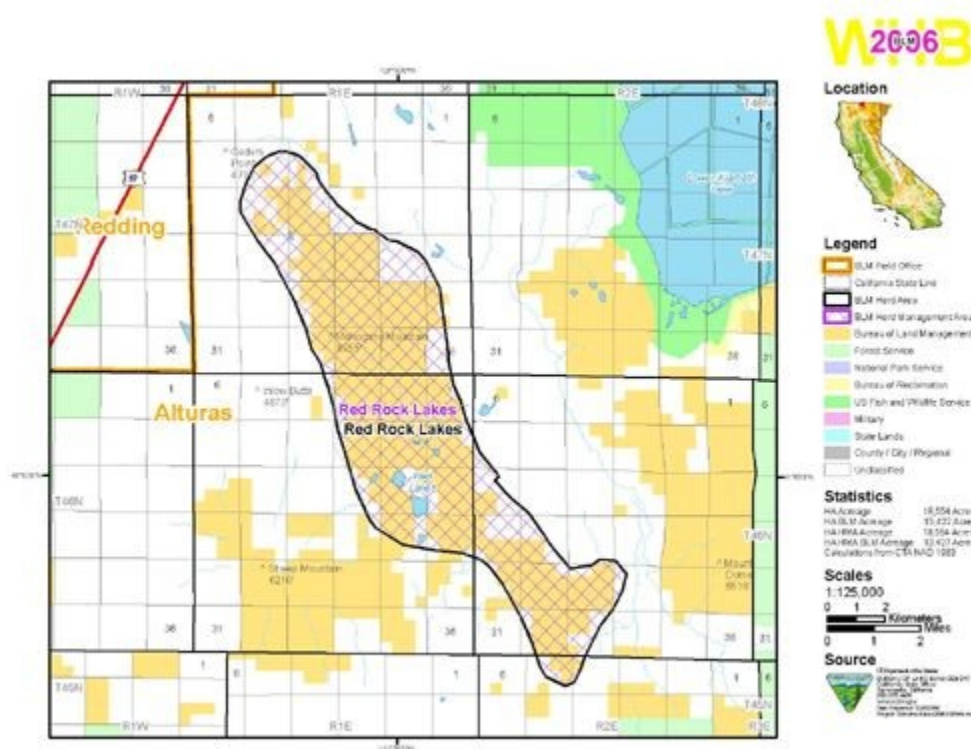
WILDLIFE: Wildlife along the ridge includes mule deer, antelope, coyotes, bobcats, hawks, eagles, sage grouse, pheasant, mountain quail and mourning doves. Many waterfowl nest and rest on the lakes during years of adequate rainfall.

HERD SIZE: 25 head

HORSE COLORS: Gray and Bay

SIZE OF HORSES: 14-16 hands and 900-1100 pounds

HISTORY: The wild horses may have ancestry tracing back to the Spanish mustang. The Spanish bloodlines have been diluted by a large variety of horses brought into the area by pioneering ranchers.



[Click for higher resolution PDF image.](#)

---

## **Twin Peaks Herd Management Area (CA-242)**

**LOCATION:** The Twin Peaks Herd Management Area is located approximately 25 miles northeast of Susanville, CA. Highway 395 border the HMA to the west. The Herd Management Area is located in both Lassen County, CA and Washoe County, NV.

**ACREAGE:** 798,000 acres are managed for wild horses and wild burros

**ELEVATION:** 4,000 feet to 7,500 feet

**TOPOGRAPHY/VEGATATION:** The terrain in this HMA consists of large, flat valley bottoms bisected by steep mountains. Dominant vegetation includes sagebrush, bitterbrush, bluebunch, needlegrass and squirreltail.

**WILDLIFE:** Wildlife occurring in the area includes mule deer, chukar, quail, pronghorn antelope, and sage grouse.

**HERD SIZE:** 448 to 760 head of horses

47 to 79 head of burros

**HORSE COLORS:** Brown and Bay

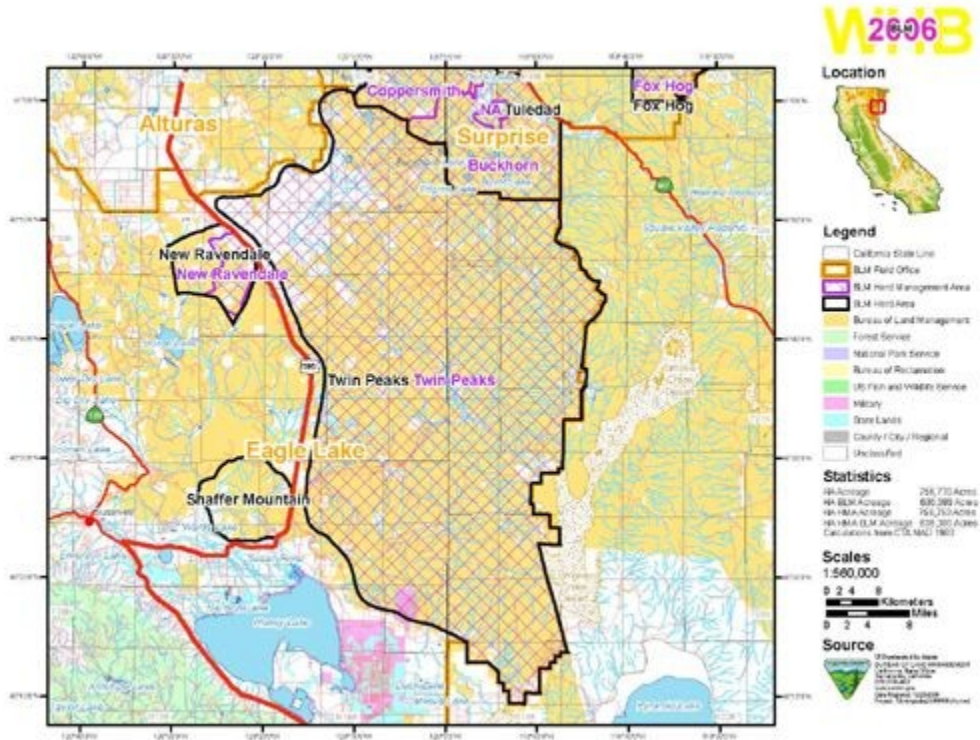
**BURROS COLORS:** Gray and Brown

**SIZE OF HORSES:** 14-16 hands and 900-1100 pounds

**SIZE OF BURROS:** 11-12 hands and 400-600 pounds

**HISTORY:** Some of the original horses in this area descended from Spanish Stock. Descendents of US Army Cavalry remounts prior to and during World War I and historic ranching stock consisting of both draft and light breeds make up most of the herd today.

Burros likely originated from historic sheep operations in the area.



[Click for higher resolution PDF image.](#)

## Wall Canyon Herd Management Area (CA-265)

**LOCATION:** The Wall Canyon Herd Management Area is located 46 miles east of Cedarville, CA. The area lies in both Washoe and Humboldt Counties of Nevada.

**ACREAGE:** 49,000 acres are managed for wild horses

**ELEVATION:** 5,500 feet to 6,500 feet

**TOPOGRAPHY/VEGATATION:** Topography consists of rolling hills and plateaus dissected by a few perennial creeks. Major vegetation species are low and big sage with bluegrass, squirreltail and needlegrass in the understory.

**WILDLIFE:** Mule deer, pronghorn antelope and sage grouse are the dominant wildlife species in the area.

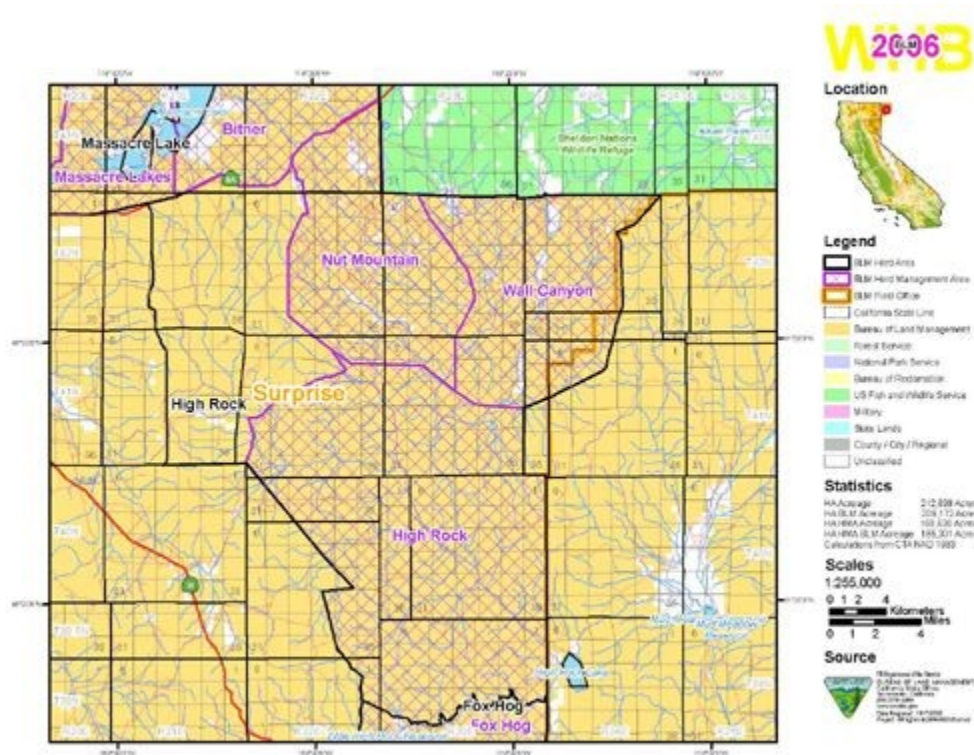
**HERD SIZE:** 15 to 25 head

**HORSE COLORS:** Black and Bay with some piebalds

**SIZE OF HORSES:** 14-16 hands and 900-1100 pounds

**HISTORY:** The wild horses in this area likely originated from historical ranching stock.





[Click for higher resolution PDF image.](#)

## Waucoba-Hunter Mountain Herd Management Area (CA-651)

**LOCATION:** The Waucoba-Hunter Mountain Herd Management Area is located in southern Inyo County, CA approximately 30 miles east of Olancho, CA.

**ACREAGE:** 23,000 acres are managed for wild burros

**ELEVATION:**

**TOPOGRAPHY/VEGATATION:**

**WILDLIFE:**

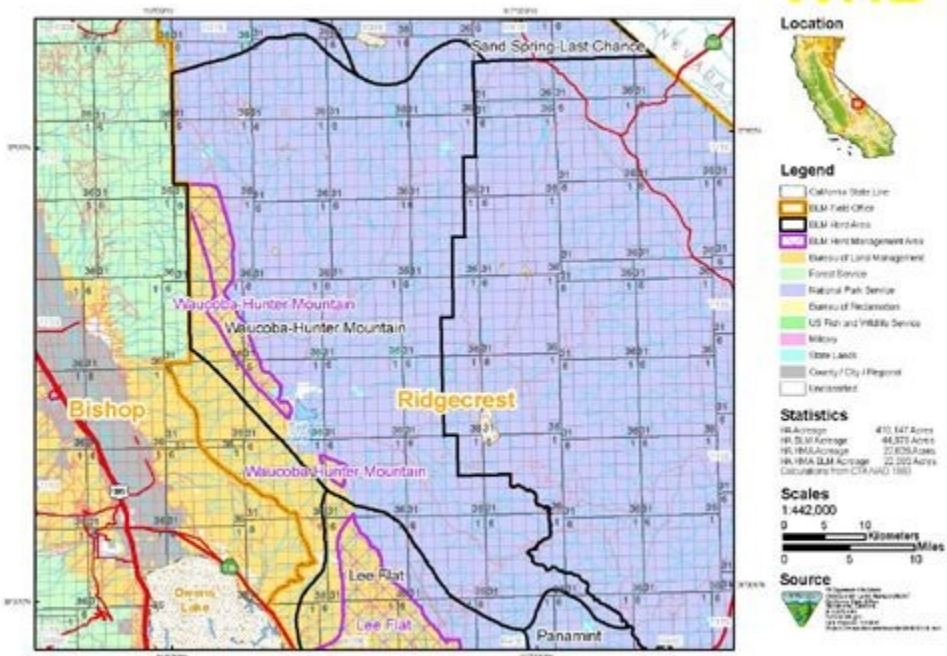
**HERD SIZE:** 11 head

**BURRO COLORS:** Gray

**SIZE OF HORSES:** 10-11 hands and 400-600 pounds

**HISTORY:** The burros in this area are believed to from mining operations in the mid-1800s. Historic sheep operations may have also contributed to the burro population.

WMB  
2006



[Click for higher resolution PDF image.](#)