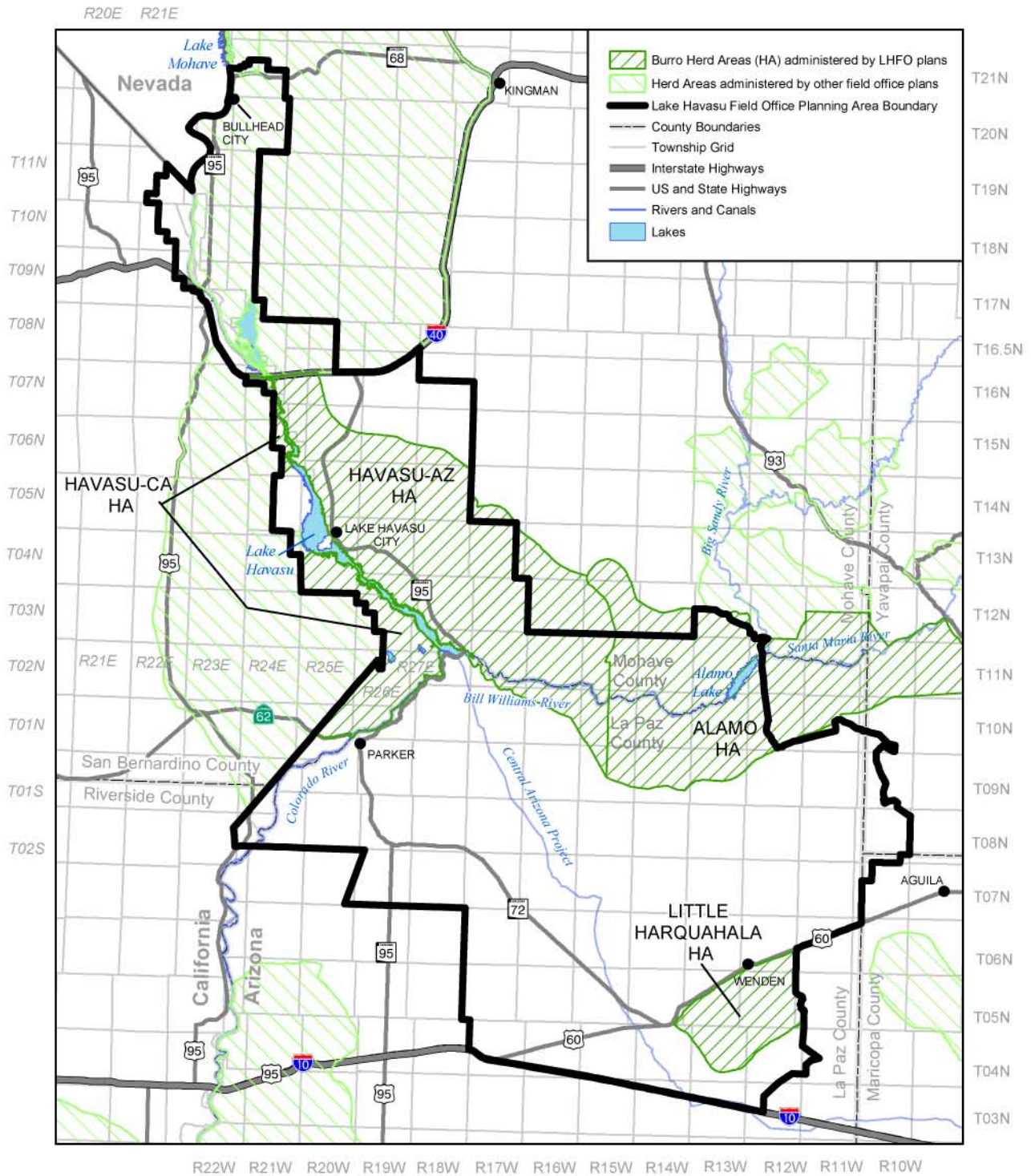
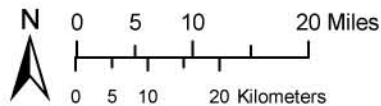


Map 2-54 Wild Horse and Burro Herd Areas



LAKE HAVASU FIELD OFFICE
 Proposed Resource Management Plan/
 Final Environmental Impact Statement



UNITED STATES DEPARTMENT OF THE INTERIOR
 Bureau of Land Management

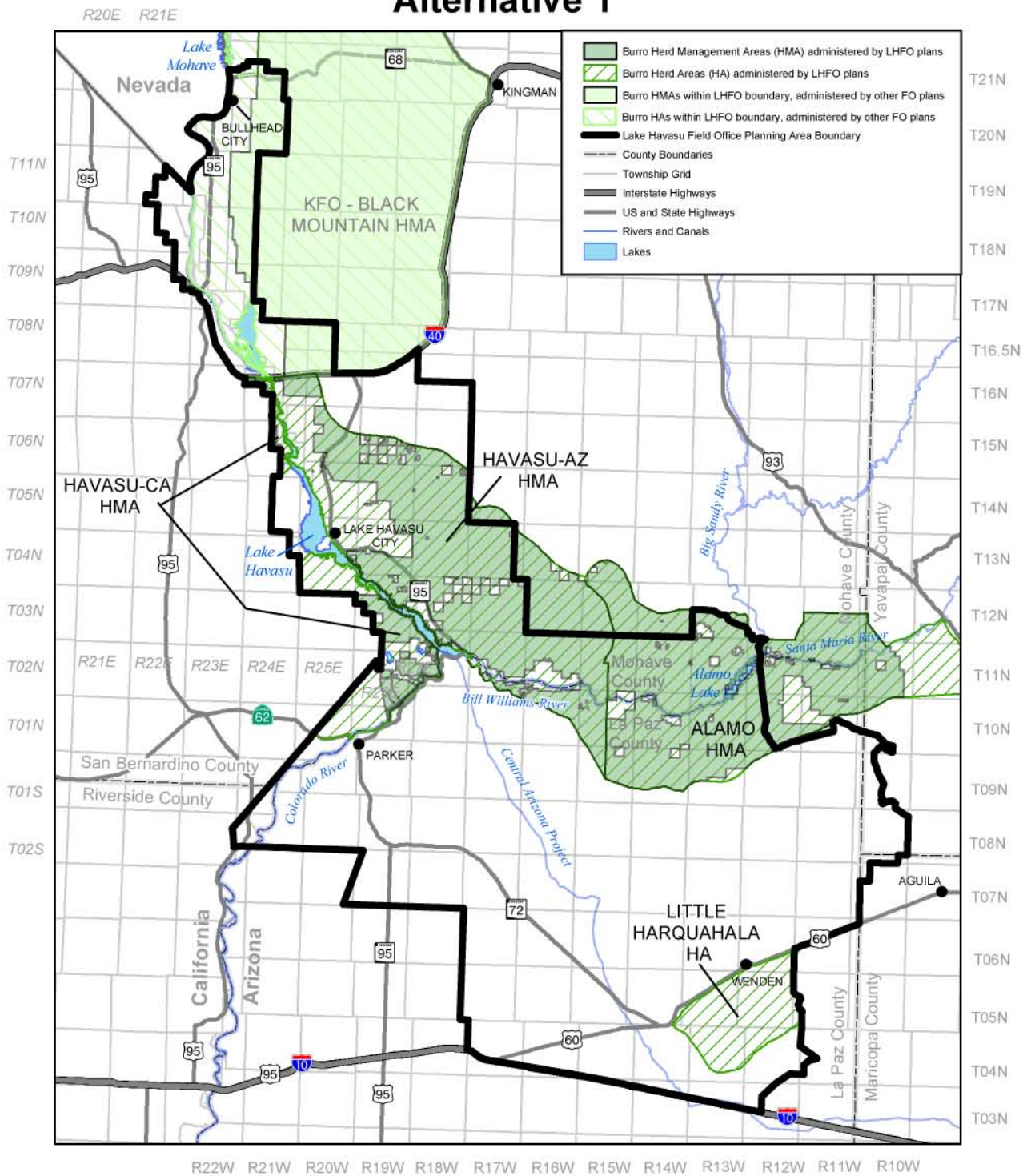


The Bureau of Land Management makes no warranties, implied or expressed, with respect to information shown on this map.

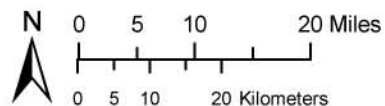
September 2006



Map 2-55 Wild Burro Herd Management Areas Alternative 1



LAKE HAVASU FIELD OFFICE Proposed Resource Management Plan/ Final Environmental Impact Statement



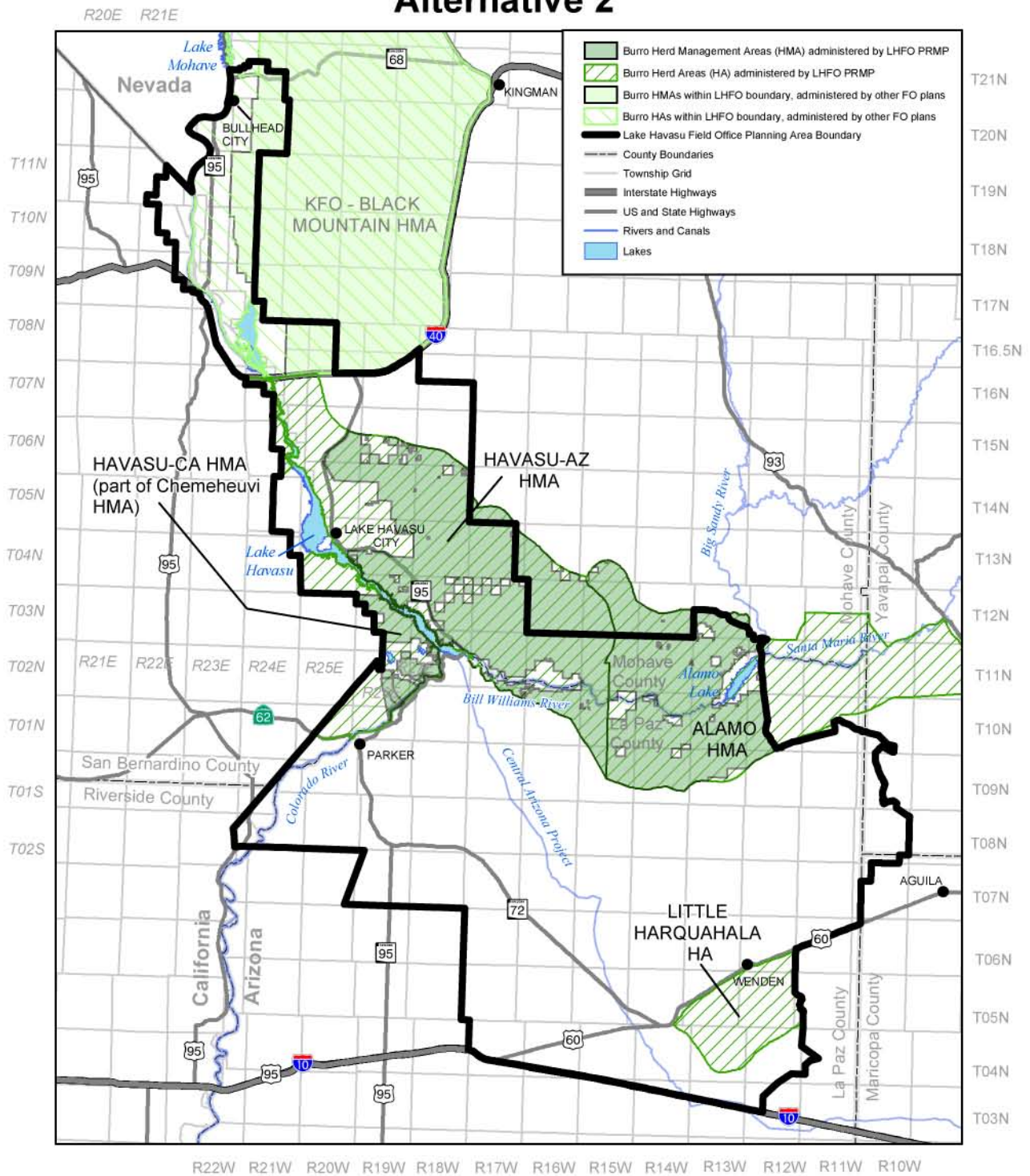
The Bureau of Land Management makes no warranties, implied or expressed, with respect to information shown on this map.

UNITED STATES DEPARTMENT OF THE INTERIOR
Bureau of Land Management

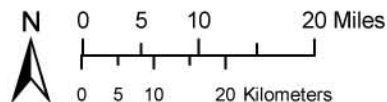
September 2006



Map 2-56 Wild Burro Herd Management Areas Alternative 2



LAKE HAVASU FIELD OFFICE Proposed Resource Management Plan/ Final Environmental Impact Statement



UNITED STATES DEPARTMENT OF THE INTERIOR
Bureau of Land Management

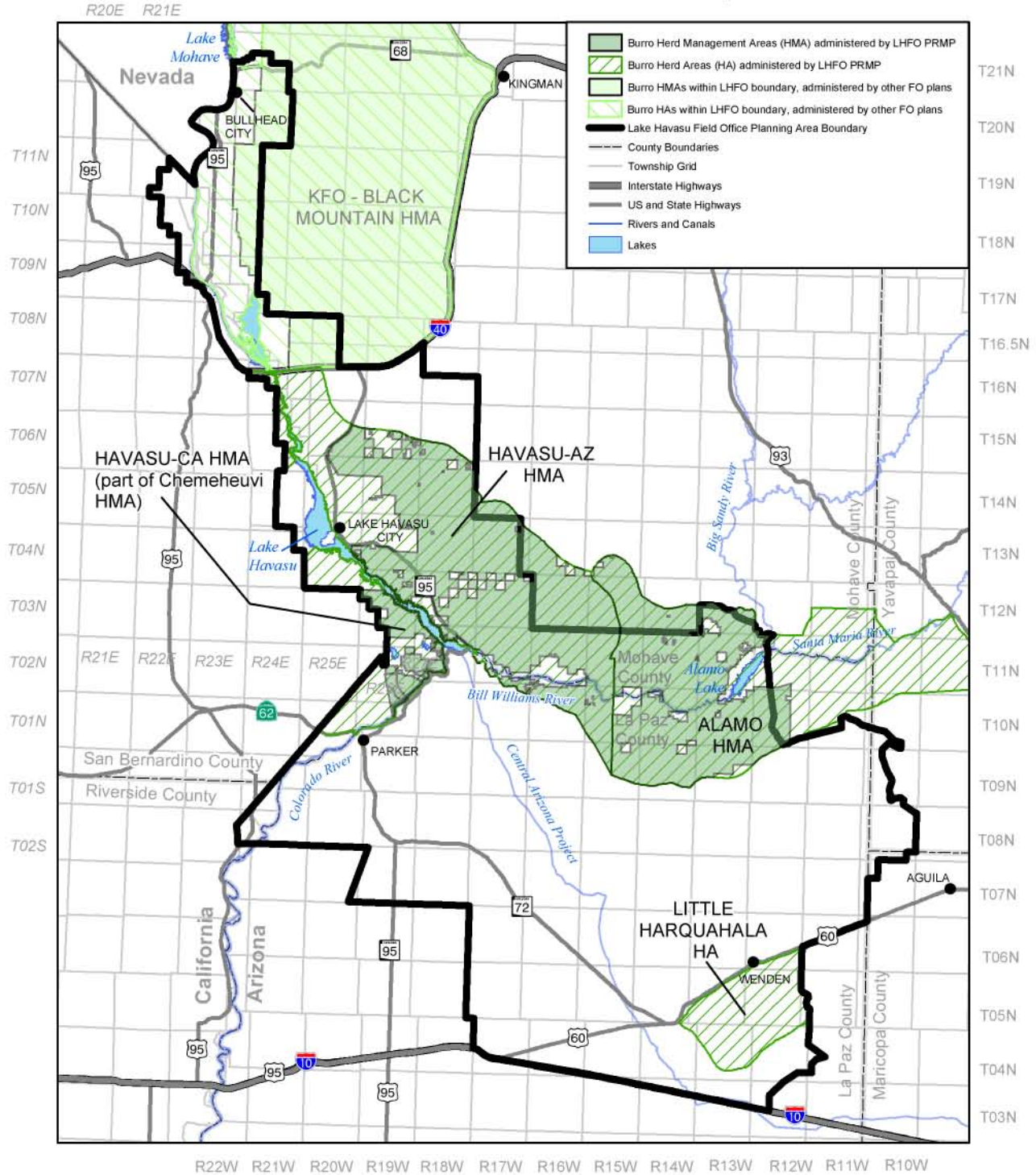


The Bureau of Land Management makes no warranties, implied or expressed, with respect to information shown on this map.

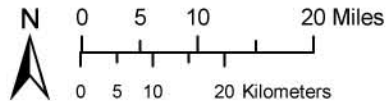
September 2006



Map 2-58 Wild Burro Herd Management Areas Alternative 4 and Alternative 5 - Proposed Plan



LAKE HAVASU FIELD OFFICE
Proposed Resource Management Plan/
Final Environmental Impact Statement



The Bureau of Land Management makes no warranties, implied or expressed, with respect to information shown on this map.

UNITED STATES DEPARTMENT OF THE INTERIOR
Bureau of Land Management

September 2006

