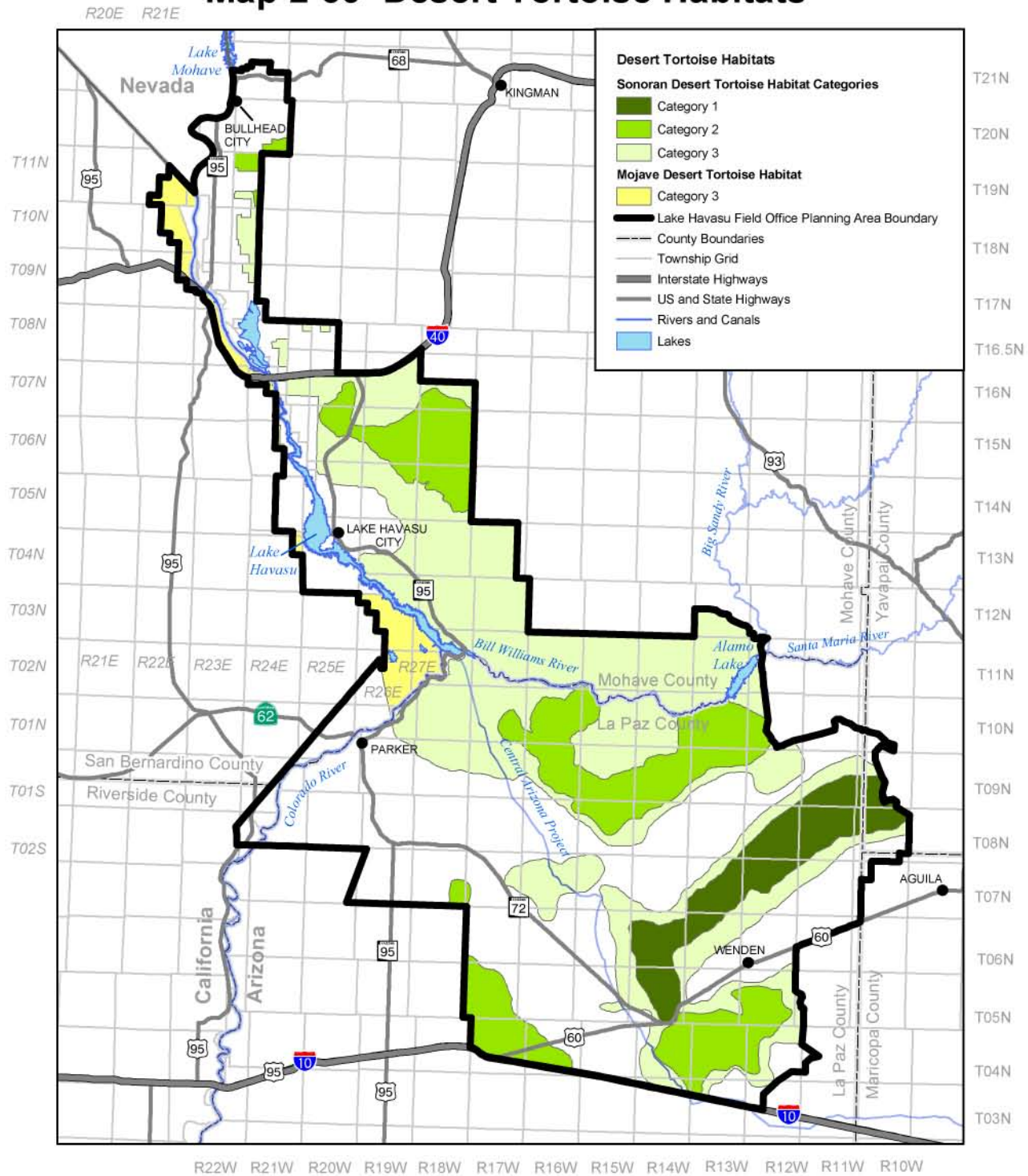
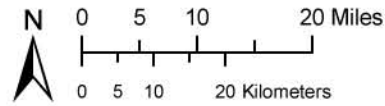


Map 2-39 Desert Tortoise Habitats



LAKE HAVASU FIELD OFFICE
 Proposed Resource Management Plan/
 Final Environmental Impact Statement



The Bureau of Land Management makes no warranties, implied or expressed, with respect to information shown on this map.

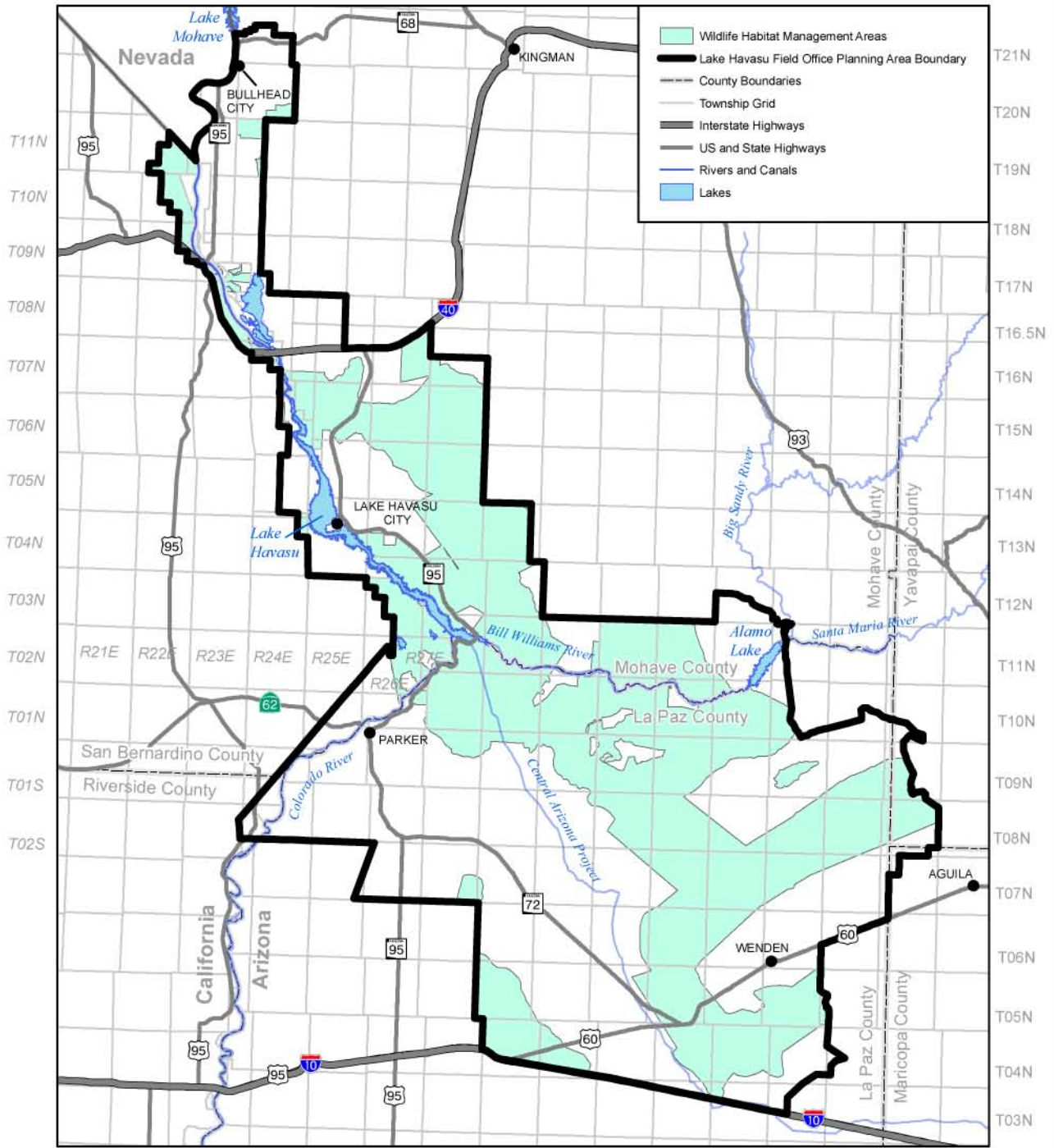
UNITED STATES DEPARTMENT OF THE INTERIOR
 Bureau of Land Management

September 2006



Map 2-40 Wildlife Habitat Management Areas

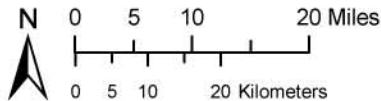
R20E R21E



R22W R21W R20W R19W R18W R17W R16W R15W R14W R13W R12W R11W R10W

LAKE HAVASU FIELD OFFICE

Proposed Resource Management Plan/
Final Environmental Impact Statement



UNITED STATES DEPARTMENT OF THE INTERIOR
Bureau of Land Management

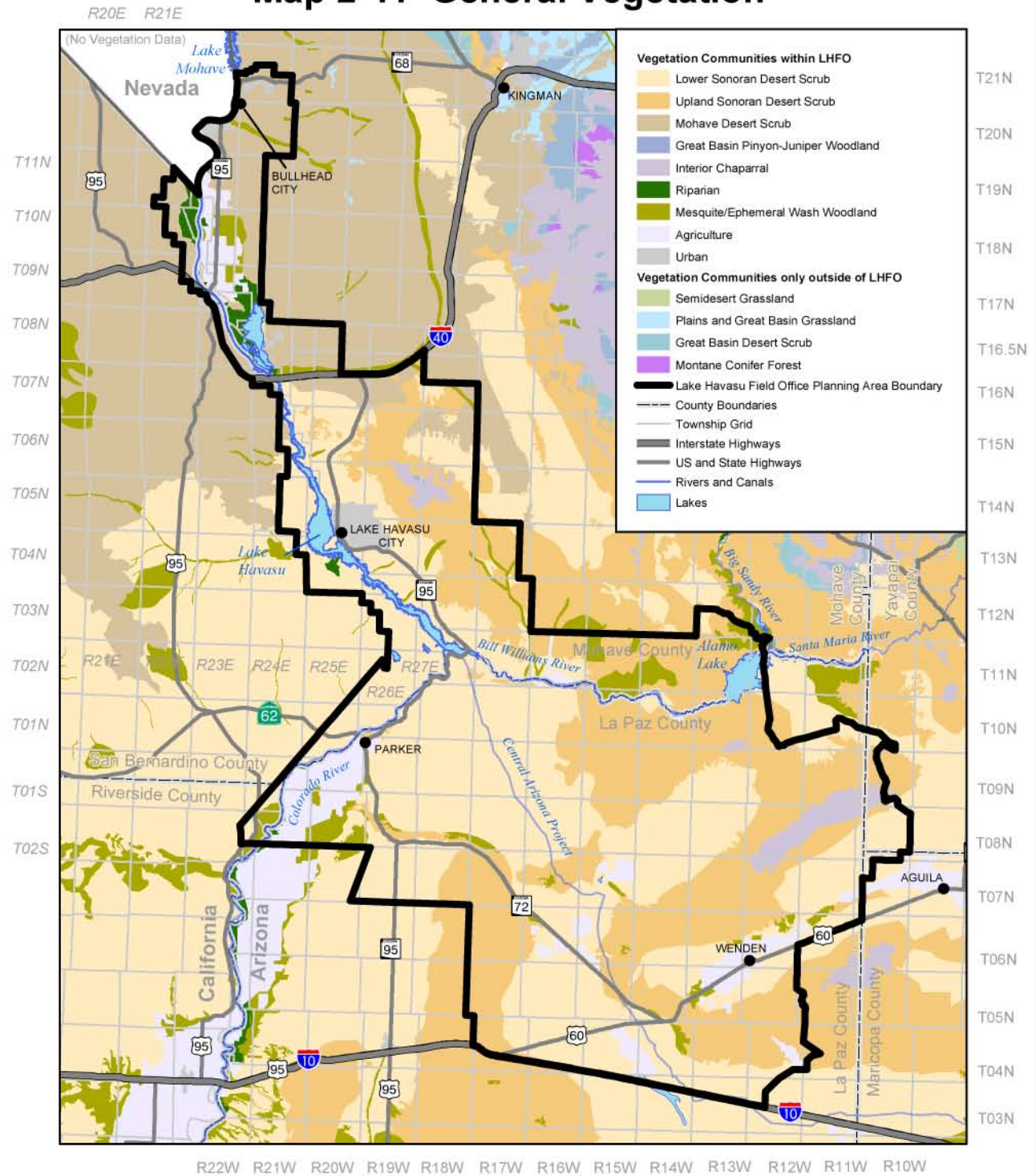


The Bureau of Land Management makes
no warranties, implied or expressed,
with respect to information shown on
this map.

September 2006

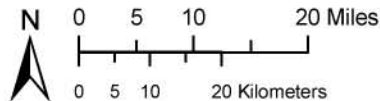


Map 2-41 General Vegetation



LAKE HAVASU FIELD OFFICE

Proposed Resource Management Plan/
Final Environmental Impact Statement



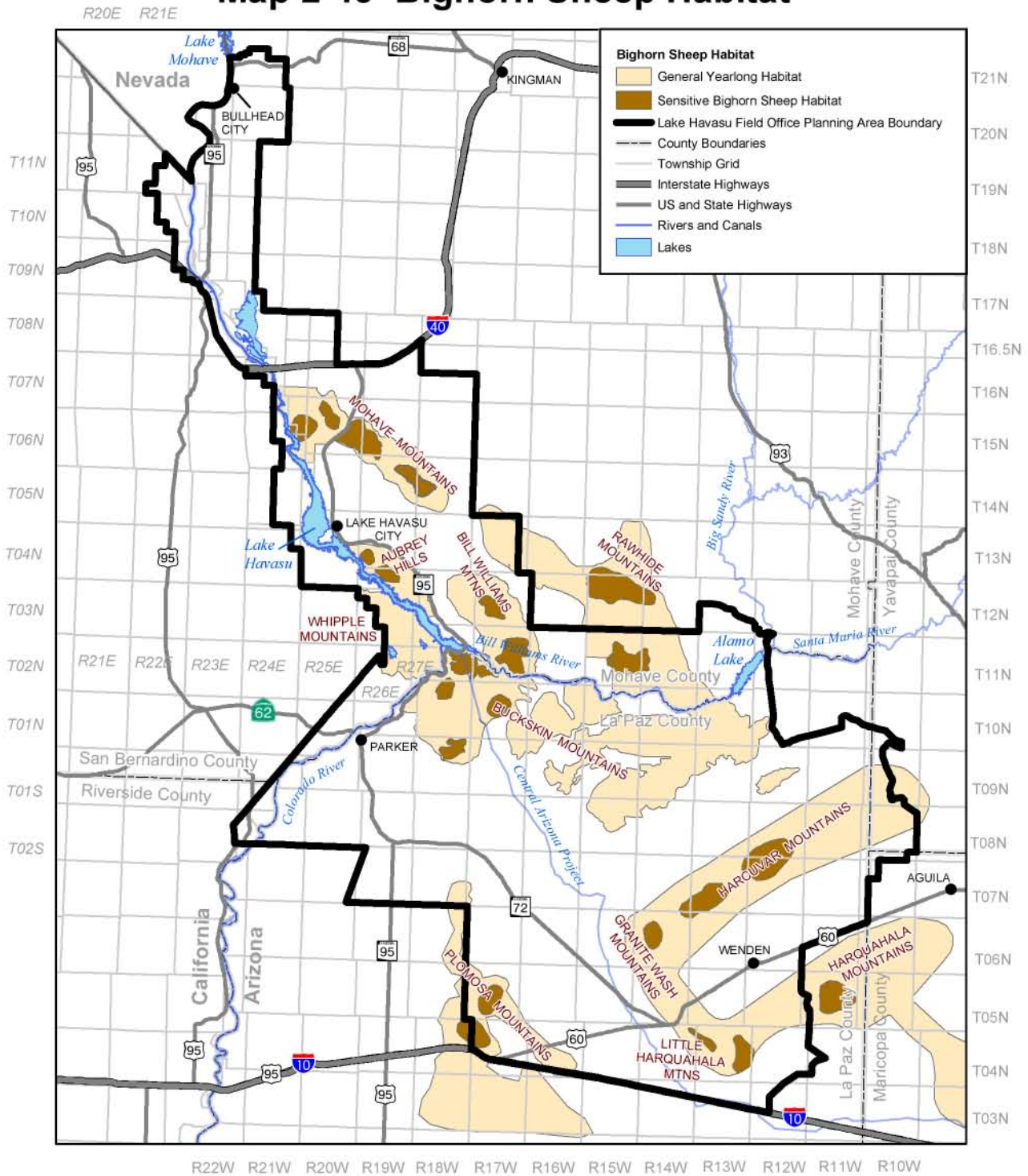
The Bureau of Land Management makes no warranties, implied or expressed, with respect to information shown on this map.

UNITED STATES DEPARTMENT OF THE INTERIOR
Bureau of Land Management

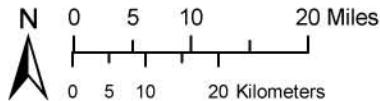
September 2006



Map 2-43 Bighorn Sheep Habitat



LAKE HAVASU FIELD OFFICE
 Proposed Resource Management Plan/
 Final Environmental Impact Statement



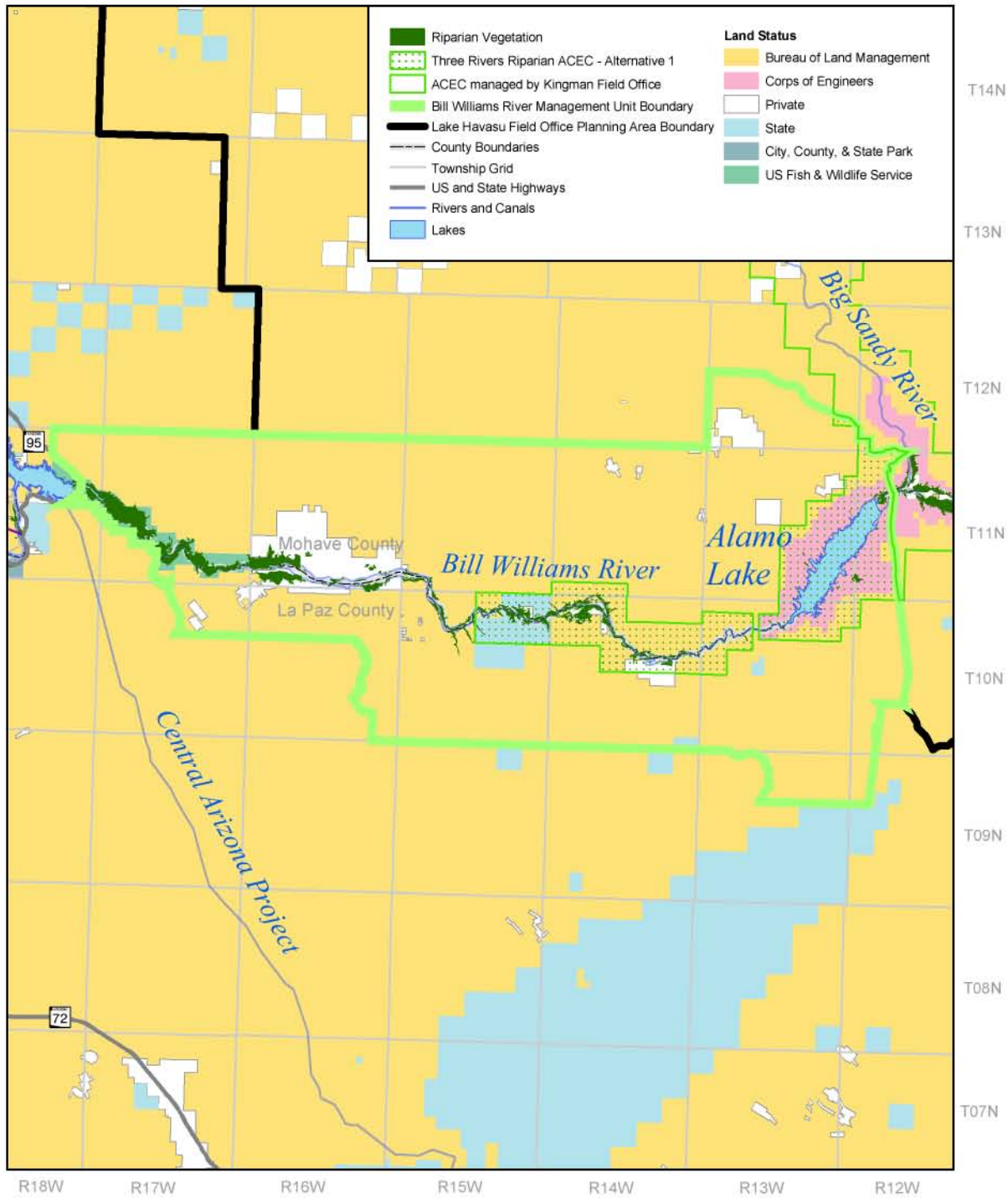
The Bureau of Land Management makes no warranties, implied or expressed, with respect to information shown on this map.

UNITED STATES DEPARTMENT OF THE INTERIOR
 Bureau of Land Management

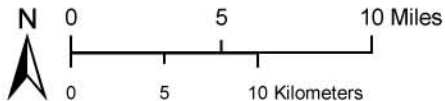
September 2006



Map 2-44 Riparian Zones Bill Williams River Management Unit



LAKE HAVASU FIELD OFFICE
Proposed Resource Management Plan/
Final Environmental Impact Statement

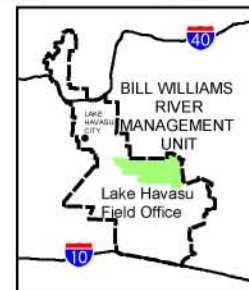


UNITED STATES DEPARTMENT OF THE INTERIOR
Bureau of Land Management

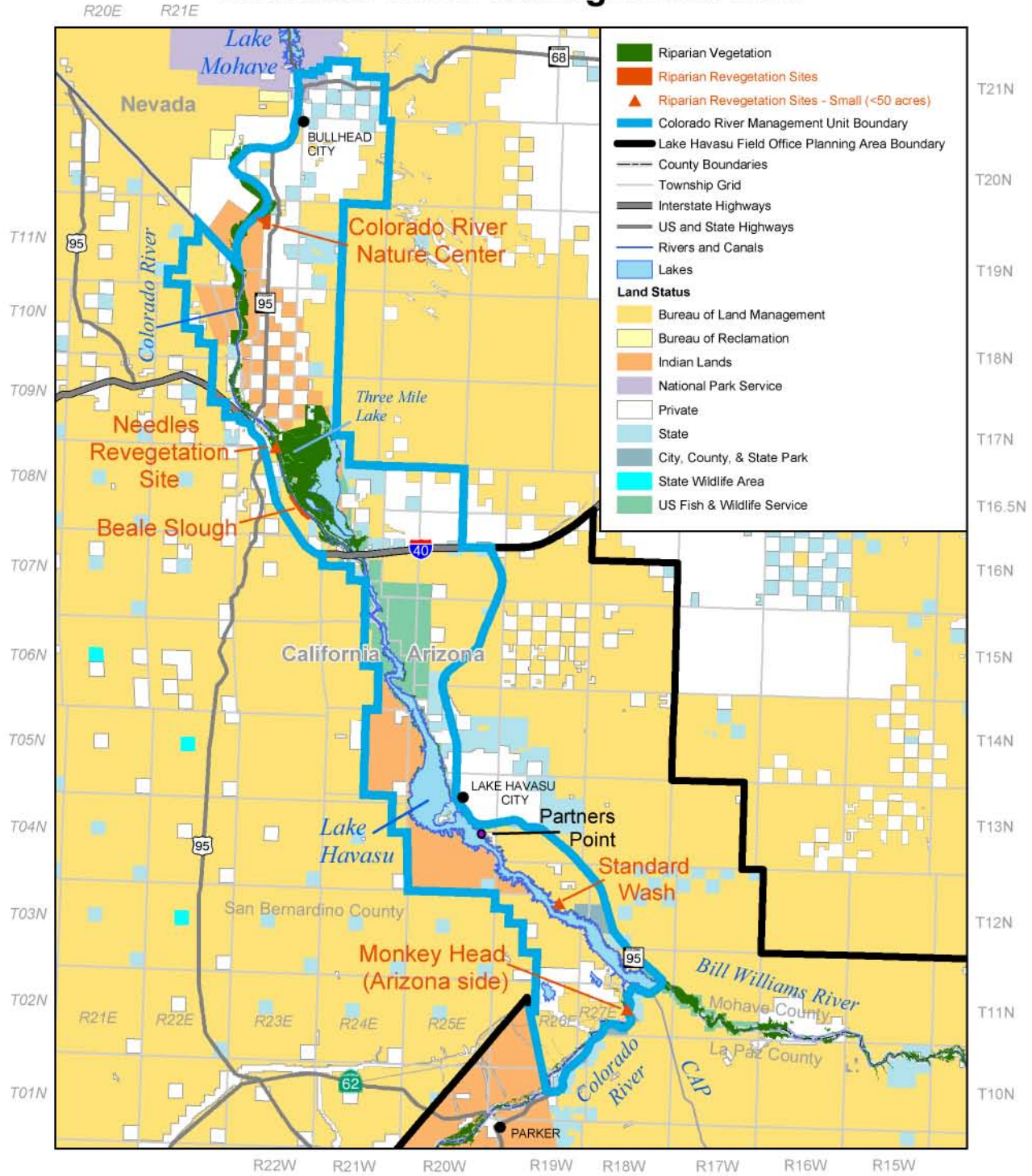


The Bureau of Land Management makes no warranties, implied or expressed, with respect to information shown on this map.

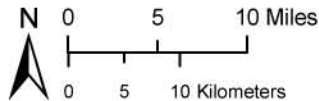
September 2006



Map 2-45 Riparian Zones Colorado River Management Unit



LAKE HAVASU FIELD OFFICE Proposed Resource Management Plan/ Final Environmental Impact Statement



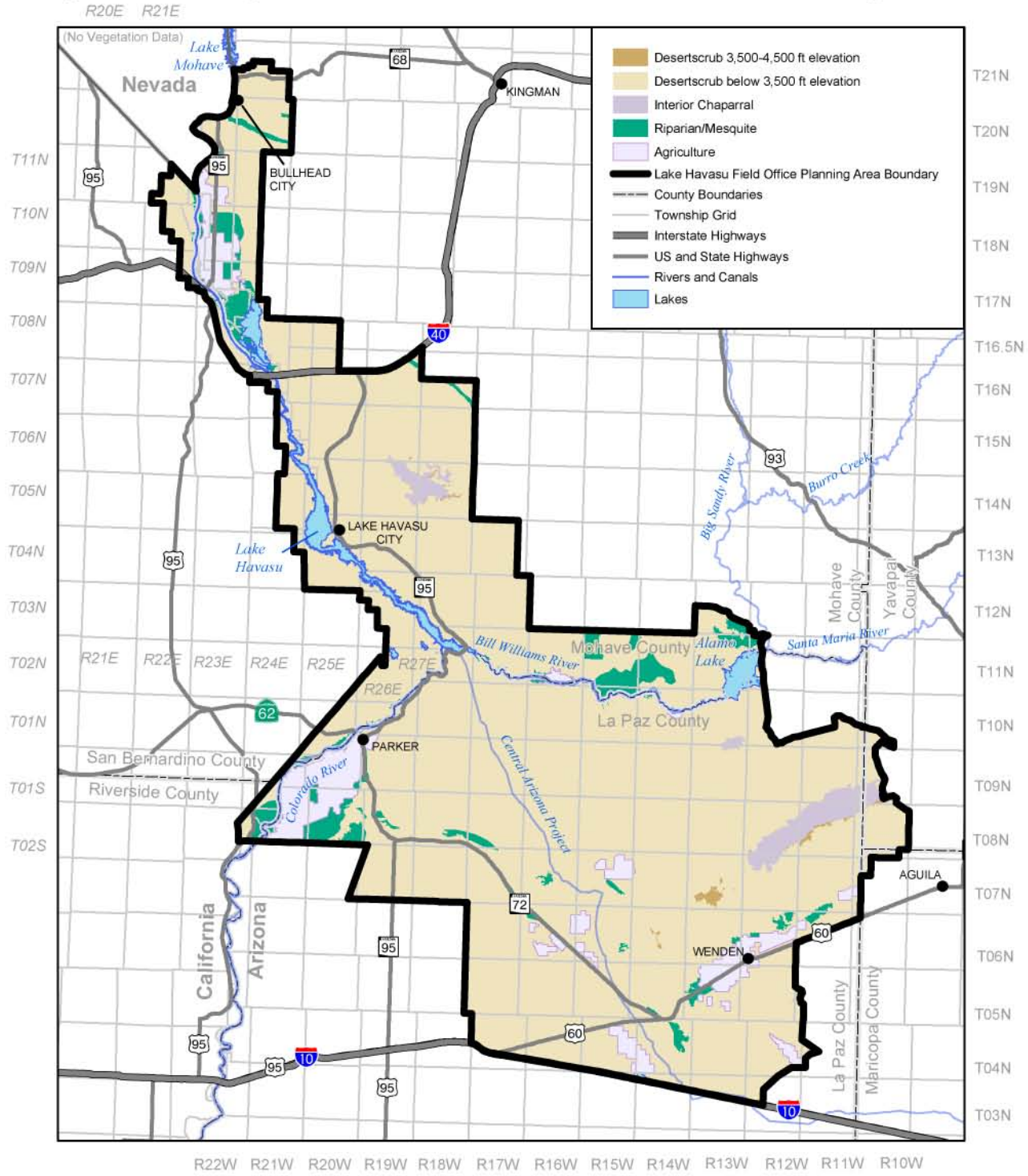
The Bureau of Land Management makes no warranties, implied or expressed, with respect to information shown on this map.

UNITED STATES DEPARTMENT OF THE INTERIOR
Bureau of Land Management

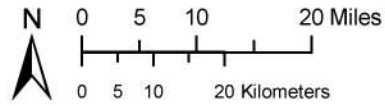
September 2006



Map 2-46 Vegetation Communities for Fire Management



LAKE HAVASU FIELD OFFICE
 Proposed Resource Management Plan/
 Final Environmental Impact Statement



The Bureau of Land Management makes no warranties, implied or expressed, with respect to information shown on this map.

UNITED STATES DEPARTMENT OF THE INTERIOR
 Bureau of Land Management

September 2006

